

FIMER



PowerX

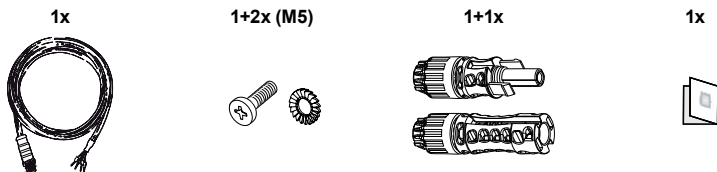
Wiring Kit

Quick Installation Guide

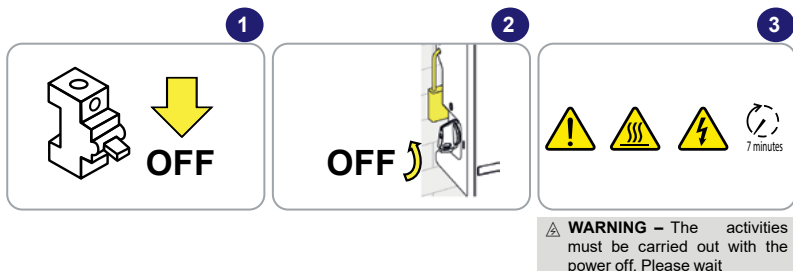
In addition to what is explained in this quick installation guide, the safety and installation information provided in the product manual must be read and followed. The technical documentation for the product is available at the website.

The device must be used in the manner described in the manual. If this is not the case the safety devices guaranteed by the inverter might be ineffective.

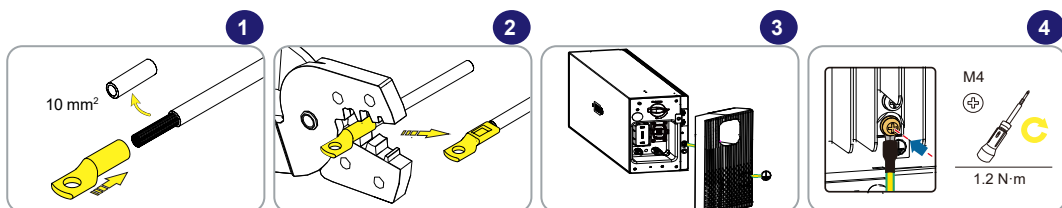
List of supplied components



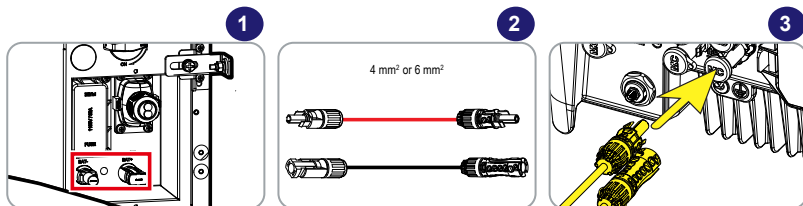
1. Powering OFF the system

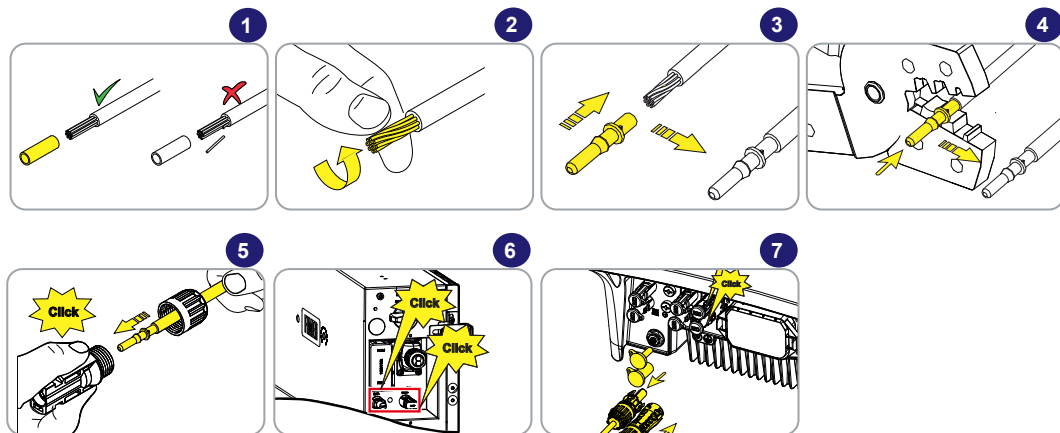


2. Protective earthing (PE) connection

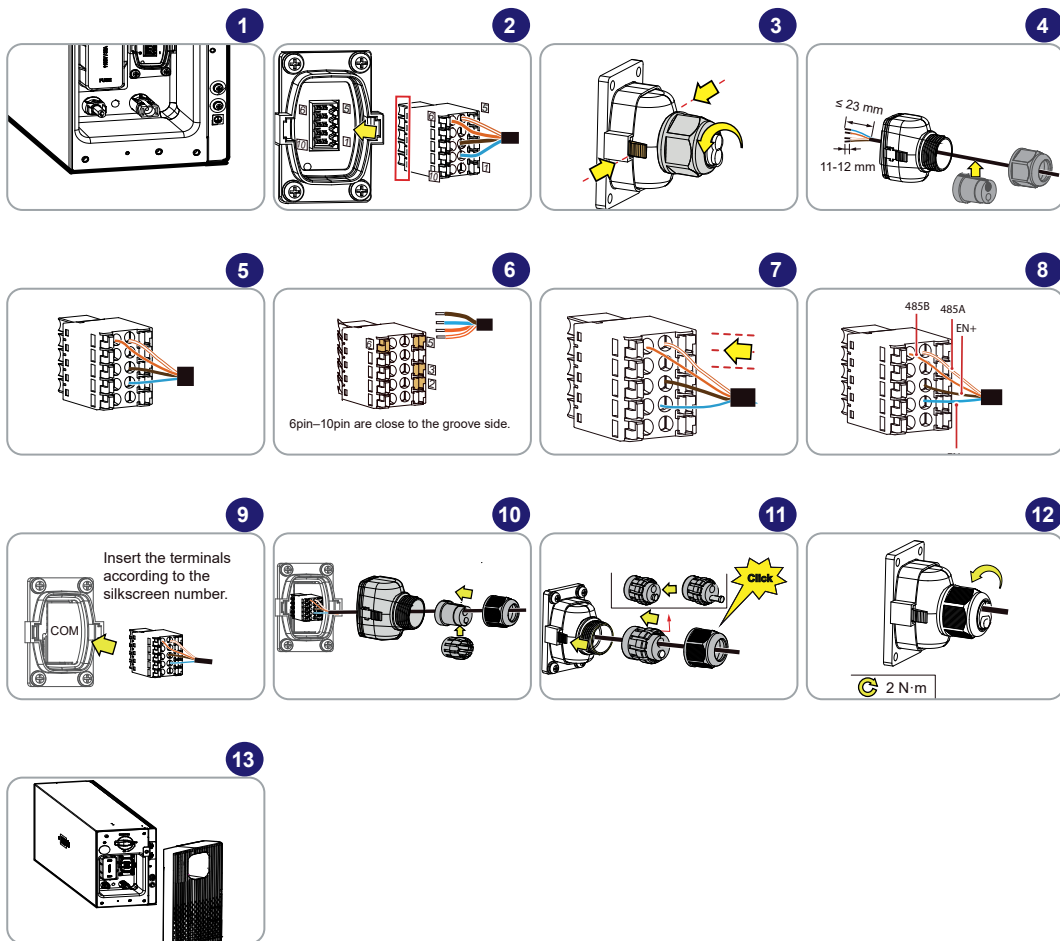


3. Installing DC Input Power cables

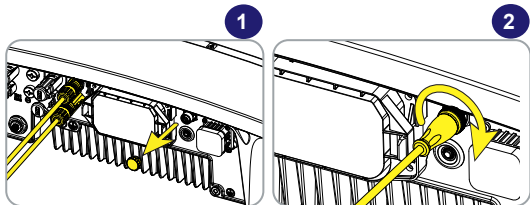




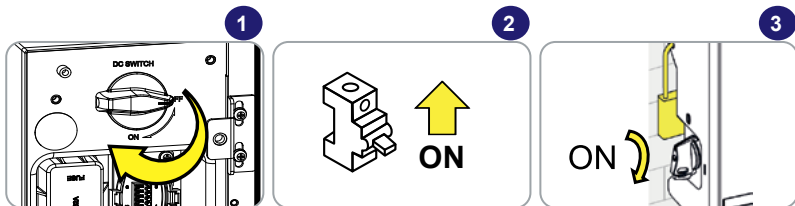
4. Installing BMS cable on PowerX



5. Installing BMS cable on PowerUNO and PowerTRIO



6. Powering ON



NOTE – First turn ON the battery, and then the inverter side (DC SWITCH + AC GRID)

7. PowerX BMS Cable pinout

PowerX Side	Wire	PowerUNO or PowerTRIO side
PIN 5 (485A)	White-Orange	485_SCOM-P-ISO
PIN 6 (485B)	Orange	485_SCOM-P-ISO
PIN 2 (ENABLE -)	Blue	GRS
PIN 3 (ENABLE +)	Brown	+12V_SELV_CH

FIMER

FIMER_Wiring-KIT-PowerUNO-PowerTRIO_Quick Installation Guide_EN_RevA

09.09.2024

For more information please contact your local FIMER representative or visit:

fimer.com

We reserve the right to make technical changes or modify the contents of this document without prior notice. With regard to purchase orders, the agreed particulars shall prevail. FIMER does not accept any responsibility whatsoever for potential errors or possible lack of information in this document.

We reserve all rights in this document and in the subject matter and illustrations contained therein. Any reproduction, disclosure to third parties or utilization of its contents – in whole or in parts – is forbidden without prior written consent of FIMER. Copyright© 2024 FIMER. All rights reserved.