



FIMER

# Solar inverter solutions for Utility applications

**"We are committed to providing our contribution in order to achieve the global community's world, as the creation of a sustainable future."**

**In a global scenario where the demand for renewable energy is constantly growing, we are among the leaders concerning the manufacturing of energy conversion solutions worldwide. We are committed to make our customers able to provide greener and smarter energy.**

**The focus of our goal is based on our experience as the world's leading manufacturer of solar inverters. Therefore our wish is to foster the materialization of an era marked by clean and sustainable energy, through innovative new concepts in both energy production and consumption.**

**Our headquarters in Vimercate (Italy) are designed to be an example of sustainability, with a 1 MW photovoltaic system and the best technologies in the field of geothermal energy.**

**Thanks to these characteristics, today we are one of the few Zero impact companies in the world.**

**Filippo Carzaniga**

Chairman

# **Table of contents**

- 04 Our brand, our roots, our future**
- 06 A Global reality, Made in Italy**
- 11 FIMER string inverter solutions**
- 39 FIMER central inverter solutions**
- 74 PVS980 central inverters connectivity solutions**
- 78 Accessories**
- 84 Life cycle services**
- 87 FIMER Friends Days**
- 88 360° Virtual Tour experience**

# Our brand, our roots, our future

Our vision is to shape a **new and powerful energy model** that uses the power of the sun to drive progress and prosperity for a cleaner and sustainable world. As a global leader in solar inverter technology, with a 100% Italian supply chain, we have the energy to make positive change happen. We are committed to building value for future generations using **clean energy** as a response to the world's growing energy needs.

We do it in a sustainable, innovative and dynamic way, through a complete portfolio of photovoltaic solutions for energy conversion and storage, and e-mobility solutions for electric vehicles. Through such extensive range of products, we share our **brave, new vision** with the world.

Our DNA and our core values all reflect our vision and mission:

## Responsibility

Every day we strive to offer our customers reliable and state-of-the-art solutions and to build a world where energy is used in a sustainable manner for future generations.



## Passion

We never stop. We focus on expanding and improving our know-how and expertise to drive growth. This is reflected in the passion we put into our work, into the solutions we create and into the technologies we design every day and in the Service that we provide to our customers.

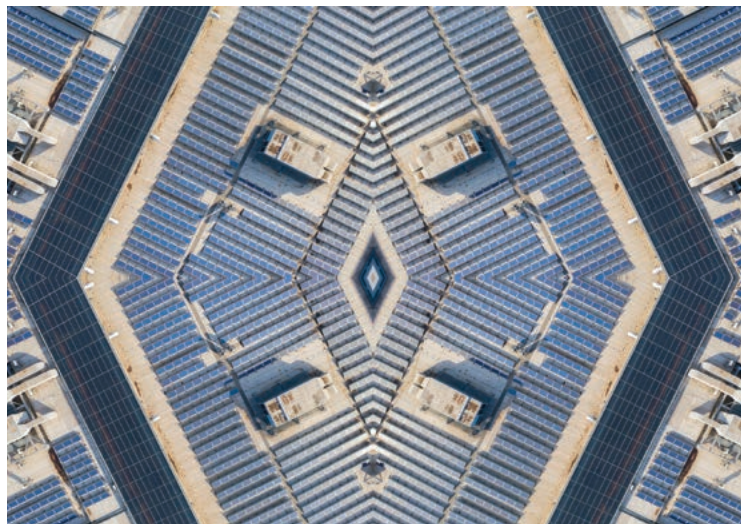
## Professionalism

We are close to our customers, to ensure the quality and distinctive excellence of our solutions. We like to leave a mark. A guarantee for those who invest in our expertise and professionalism.



## Flexibility

We are quick to interpret changes and fast at adapting to market developments. We are able to constantly improve and work hard to be number one when it counts, where it counts. Our skills and our ability to make the most of change are an integral part of our way of being.





## Vimercate Headquarters

All over the world, our work contributes to reducing CO<sup>2</sup> emissions. Our global Headquarters in Vimercate are designed to set an example of efficiency, sustainability and technology that has made us one of the few companies with Zero Impact, powered by a 1 MW photovoltaic system constructed with highly sustainable materials. Our HQ in Vimercate features an area specializing in cutting-edge carpentry and logistics. We constantly invest in high-precision machines and technologies, to guarantee the quality of our solutions manufactured both in Vimercate and Terranuova Bracciolini.

## Terranuova R&D and manufacturing site

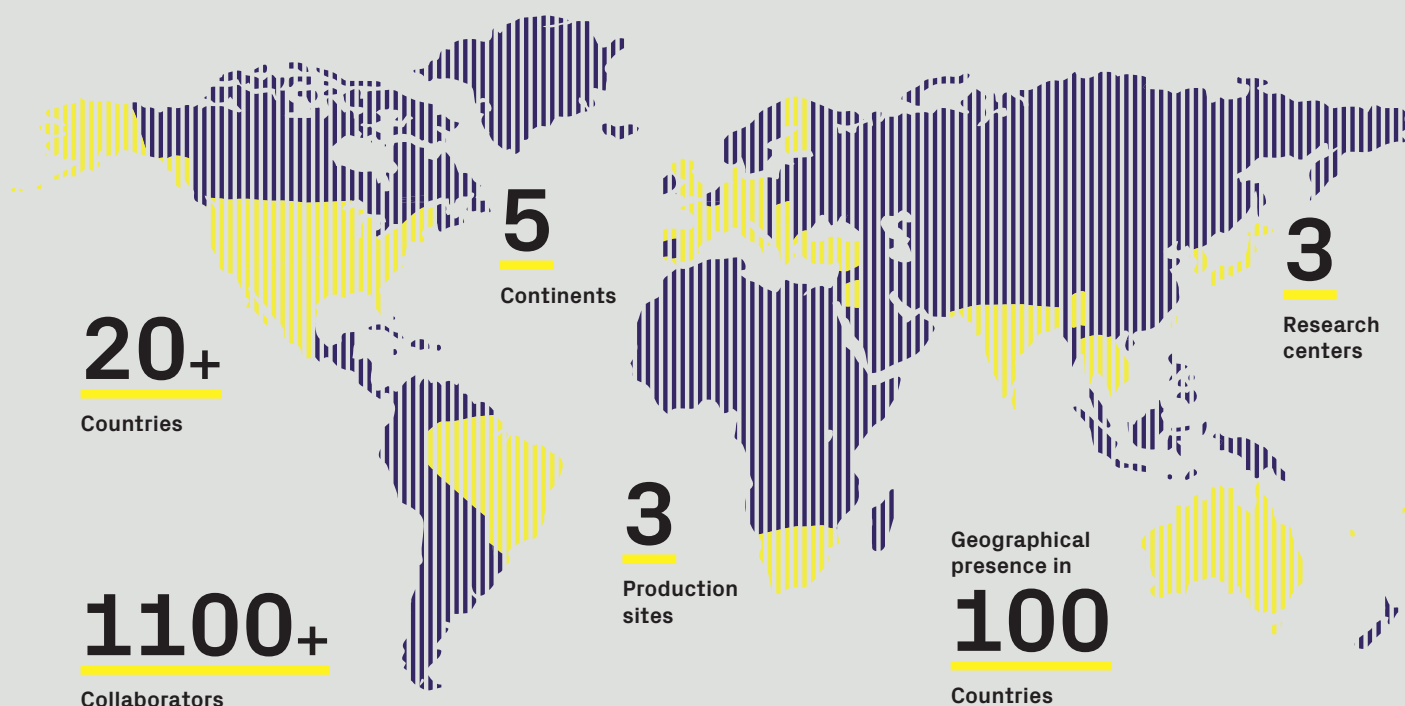
Our Terranuova Bracciolini branch features an innovative research and development department, several technologically advanced laboratories and highly specialized production areas, making FIMER an Italian technology leader.



# A Global reality, Made in Italy

Operating in more than 20 countries, with over than 1.100 collaborators and one of the broadest solutions portfolio, we are now one of the leading manufacturers of energy conversion systems, ready to listen and face every challenge in every corner of the world.

Research & Development, the main production plants and all the main decision-making processes take place in Italy. We have a common goal that goes beyond all borders: to expand Italian technological excellence to the whole world.



Our solutions are based on over 80 years of experience and continuous technological advances. Standardized, certified and expandable: the production processes applied and the plants in which the inverters are manufactured play a key role in ensuring the high quality of our offer. Engineering excellence, rigorous quality and testing standards are corroborated by our global certifications; we strive to achieve the highest levels of quality in every aspect of our business.

#### **Certified Partners to ensure high quality and a reliable service at a global level.**

The excellence of the Made in Italy concept also extends to our Service Partner Network. We select the Partners according to their professionalism and reliability criteria and we offer pre-and post-sales services, Customer support, webinars and constant education. We have a network of certified and trained partners, who know the market inside out and are available to propose our solar and e-mobility solutions, tailored to local regulations and specific needs.

# FIMER solar inverter solutions for Utility application

## String inverter solutions

FIMER string inverter solutions enable the smart and cost-effective designs for industrial and small utility-scale PV power plants by maximizing energy yields even in challenging land shapes and locations. FIMER's offering for these plants includes complete plug and play inverter solutions and MV stations. The string inverter solutions can be utilized also in PV power plants of commercial and industrial buildings to minimize the needed investment.



Power block size (kW)

## Central inverter solutions

In large ground-mounted multi-megawatt photovoltaic (PV) power plants the PV modules are typically installed uniformly mounted at ground level, either on fixed-tilted structures facing the sun or on tracking devices. For these land-based power plants FIMER central inverters offer the most cost-effective and efficient solution for PV energy generation by feeding electricity directly to the medium voltage (MV) power distribution network (i.e. grid).

FIMER's offering for large plants includes a wide range of central inverter stations and turnkey solutions.



Power block size (kW)

# Meet your bankability and profit targets with FIMER solar inverter solutions

Maximize the return on your PV investment with solar inverter solutions designed for high total efficiency, reliability and ease of installation.

## Proven solutions with long-term reliability

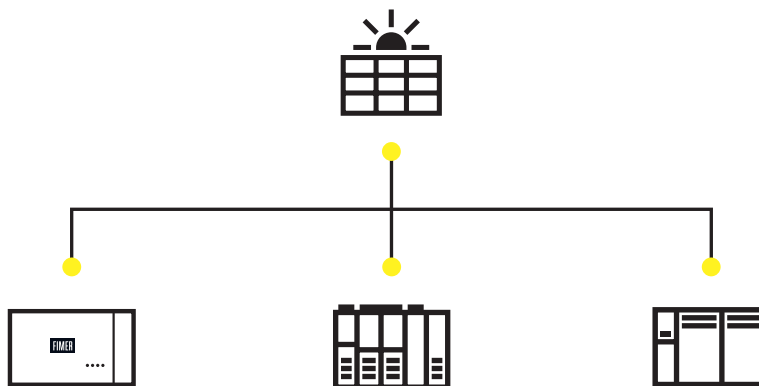
FIMER inverter solutions utilize decades of experience and advances in inverter and power converter technology. Together with FIMER's engineering know-how and complete product portfolio for PV power plants, FIMER inverter solutions provide optimized plug and play experience for quick and reliable connection of the PV plant to the grid.

## Global presence with local support

FIMER solar inverters solutions are supported through a worldwide sales and services network. The high-performance FIMER solutions provide highly reliable, cost-effective and bankable utility-scale PV power plants. Wherever your project is located, FIMER is your reliable partner to support you over the whole lifetime of your plant.

## FIMER solar inverter solutions – features and benefits

- Plug and play solutions, designed for large-scale solar power generation enabling rapid installation with cost-effectiveness
- All-in-one design ensuring maximum uptime of the plant with minimum total investment
- High reliability and efficiency with low auxiliary power consumption resulting in high total performance
- Modular and serviceable systems increased uptime
- Proven technology and reliable components securing long operating life and attractive return on investment
- Smart connectivity with controllability for digital grid compatibility
- Global life cycle services and support









# FIMER string inverter solutions

The future of energy is anchored to renewable energy sources like photovoltaics that have already driven the transformation in the way energy is produced, consumed and provided through modern distribution grids. Photovoltaics are already one of the most cost-effective energy sources in many regions of the world. When they complement with digital technologies the benefits for users are at the maximum scale.

FIMER's offering includes three-phase string inverters as well as string inverter solutions with medium voltage (MV) stations. The string inverter solutions can be used in PV power plants of commercial and industrial buildings as well as in ground mounted applications.

## **Bright future ahead for decentralized power generation**

Designed to optimize the total cost of ownership in PV projects, our inverters guarantee high total efficiency and reliability. The high power density and reduced installation and maintenance efforts enhance overall cost efficiency.

Thanks to their modularity and flexibility, our string inverters are the ideal solution for simplified system planning and design.

## **Complete string inverter solutions for decentralized energy at its full potential**

Economically attractive solutions can also be built in remote locations or places where land shapes create additional challenges for the plant design. Even multi-megawatt size installations can be designed with technically and

economically cost-effective results, thanks to our complete string inverter solutions. They include all MV components as well as a series of cloud based advanced communications services, which simplify the integration in smart environments.

Thanks to our string inverter solutions for decentralized applications, many companies can achieve greater efficiency and sustainable growth, today and tomorrow.

## **Features and benefits**

- Configurable all-in-one design with built-in and monitored protection devices providing reduced system cost
- Wide input voltage range with multiple MPPT (Maximum Power Point Tracking) enabling flexibility for system designers
- High total efficiency for rapid return on investment
- Advanced grid support functions and compatibility with grid codes
- Safe and intuitive user and service interface enabling fast and easy commissioning
- Robust enclosure with IP65 rating for outdoor installations

# String inverter

## PVS-175-TL

### up to 185 kW

The PVS-175-TL is FIMER's innovative three-phase string inverter, delivering a six-in-one solution to enhance and optimize solar power generation for ground mounted utility-scale applications.

#### High power density

This new high-power string inverter with the highest power density within the 1500 Vdc segment, delivers up to 185 kVA at 800 Vac. This not only maximizes the ROI for ground-mounted utility-scale applications but also reduces Balance of System costs (i.e. AC side cabling) for small to large scale, free field ground mounted PV installations.

#### Design flexibility

The inverter comes equipped with 12 MPPT, the highest available in the market, assuring maximum PV plant design flexibility and increasing yields also in case of complex installations.

#### Installer friendly design

Quick and easy installation, thanks to plug and play connectors, as the existing PV module's mounting systems can be used to install the inverters, thus saving time and cost on site preparation and hire of plant.

The fuse and combiner free design eliminates the need for external components, such as separate DC combiner boxes and AC first level combiners, thanks to the integrated DC disconnect and AC wiring compartment with optional AC disconnect.

The Advanced Cooling Concept preserves the lifetime of the system and minimizes O&M costs thanks to internal heavy-duty inverter cooling fans. These can be easily removed during scheduled maintenance cycles whilst the power module can be easily replaced without removing the wiring box.

#### Advanced communication for O&M

Standard wireless access from any mobile device makes the configuration of inverter and plant easier and faster. Improved user experience thanks to a built-in User Interface (UI) enables access to advanced inverter configuration settings.

The Installer for Solar Inverters mobile APP and configuration wizard enable a quick multi-inverter installation and commissioning thus reducing the time spent on site.

#### Fast system integration

Industry standard Modbus (RTU/TCP)/SUNSPEC protocol enables fast system integration.

Two Ethernet ports enable fast and future-proof communication for PV plants.

#### Protect your assets

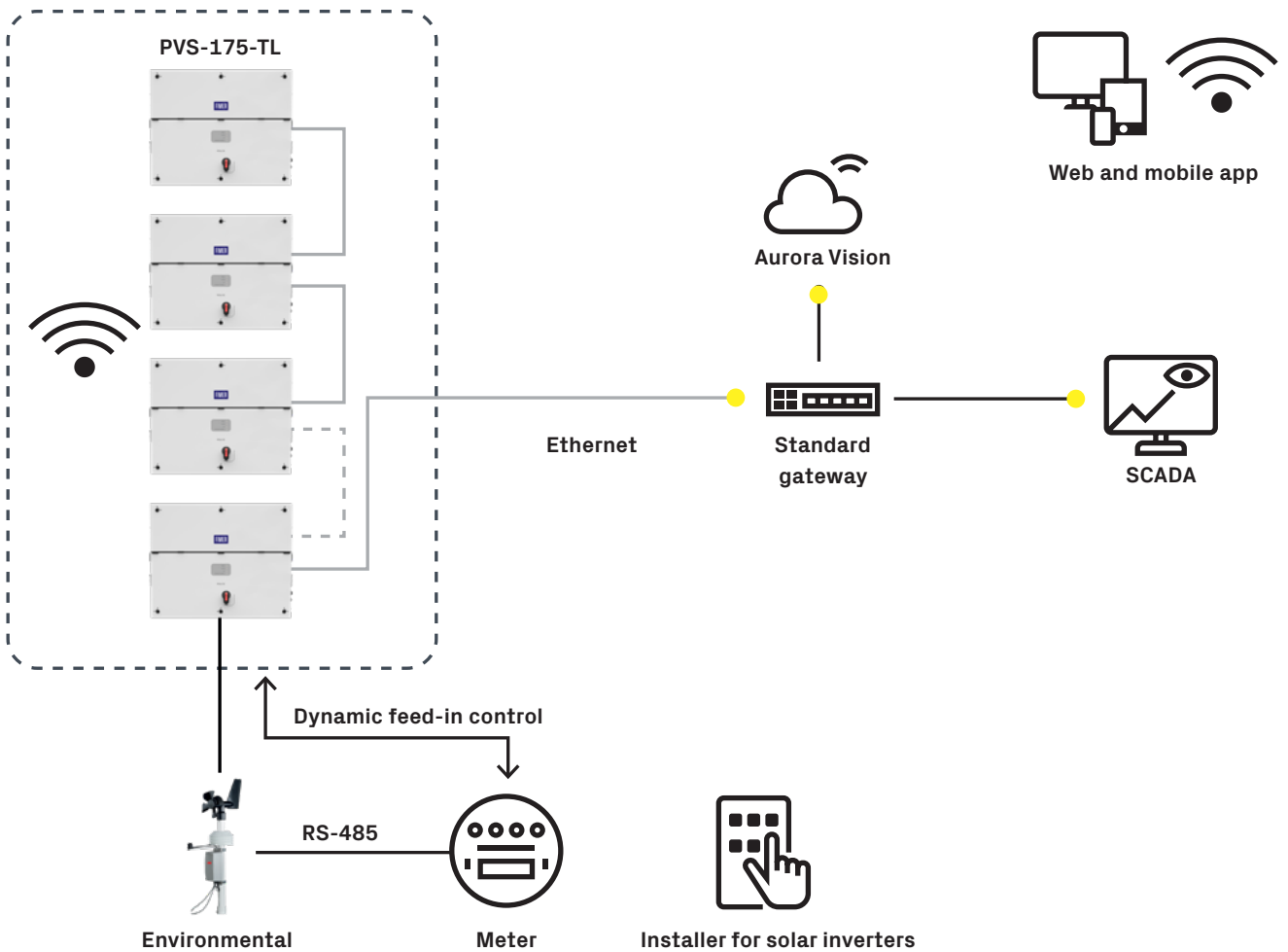
Monitoring your assets is made easy, as every inverter is capable to connect to Aurora Vision cloud platform and thanks to the state-of-the-art cybersecurity and Arc Fault Detection option, your assets and profitability are secure in the long term.

#### Highlights

- Up to 185 kW power rating, highest in class
- All-in-one combiner and fuse free design
- Separate power module and wiring compartment for fast swap and replacement
- Easy access to consumables for fast inspection and replacement
- 12 MPPT and wide input voltage range for maximum energy yield
- WLAN interface for commissioning and configuration
- Remote monitoring and firmware upgrade via the Aurora Vision cloud platform (logger free)
- Free of charge standard access to Aurora Vision cloud



FIMER PVS-175-TL block diagram



## Technical data and types

| Type code                                                                | PVS-175-TL                                                                                                            |
|--------------------------------------------------------------------------|-----------------------------------------------------------------------------------------------------------------------|
| <b>Input side</b>                                                        |                                                                                                                       |
| Absolute maximum DC input voltage ( $V_{max,abs}$ )                      | 1500 V                                                                                                                |
| Start-up DC input voltage ( $V_{start}$ )                                | 750 V (650...1000 V)                                                                                                  |
| Operating DC input voltage range ( $V_{d,min}...V_{d,max}$ )             | 0.7 x $V_{start}$ ...1500 V (min 600 V)                                                                               |
| Rated DC input voltage ( $V_{dc,r}$ )                                    | 1100 Vdc                                                                                                              |
| Rated DC input power ( $P_{dc,r}$ )                                      | 188000 W @ 30°C - 177000 W @ 40°C                                                                                     |
| Number of independent MPPT                                               | 12                                                                                                                    |
| MPPT input DC voltage range ( $V_{MPPTmin}...V_{MPPTmax}$ ) at $P_{acr}$ | 850...1350 V                                                                                                          |
| Maximum DC input current for each MPPT ( $I_{MPPTmax}$ )                 | 22 A                                                                                                                  |
| Maximum input short circuit current for each MPPT ( $I_{SCmax}$ )        | 30 A                                                                                                                  |
| Number of DC input pairs for each MPPT                                   | 2 DC inputs per MPPT                                                                                                  |
| DC connection type                                                       | PV quick fit connector <sup>1)</sup>                                                                                  |
| <b>Input protection</b>                                                  |                                                                                                                       |
| DC Series Arc Fault Circuit Interrupter <sup>2)</sup>                    | Type I acc. to UL 1699B with single-MPPT sensing capability                                                           |
| Reverse polarity protection                                              | Yes, from limited current source                                                                                      |
| Input over voltage protection for each MPPT                              | Type 2 with monitoring                                                                                                |
| Photovoltaic array isolation control (insulation resistance)             | Yes, acc. to IEC 62109-2                                                                                              |
| Residual Current Monitoring Unit (leakage current protection)            | Yes, acc. to IEC 62109-2                                                                                              |
| DC Load Breaking Disconnect Switch (rating for each MPPT)                | 20 A/1500 V - 50 A/1000 V                                                                                             |
| Fuse rating                                                              | N/A, No fuses                                                                                                         |
| String current monitoring                                                | MPPT-level current sense                                                                                              |
| <b>Output side</b>                                                       |                                                                                                                       |
| AC Grid connection type                                                  | Three phase 3W+PE (TN system)                                                                                         |
| Rated AC power ( $P_{acr}$ @ $\cos\phi=1$ )                              | 175 000 W @ 40°C                                                                                                      |
| Maximum AC output power ( $P_{ac,max}$ @ $\cos\phi=1$ )                  | 185 000 W @ $\leq 30^\circ\text{C}$                                                                                   |
| Maximum apparent power ( $S_{max}$ )                                     | 185 000 VA                                                                                                            |
| Rated AC grid voltage ( $V_{ac,r}$ )                                     | 800 V                                                                                                                 |
| AC voltage range                                                         | (552...960) <sup>3)</sup>                                                                                             |
| Maximum AC output current ( $I_{ac,max}$ )                               | 135 A                                                                                                                 |
| Rated output frequency ( $f_r$ )                                         | 50 Hz/60 Hz                                                                                                           |
| Output frequency range ( $f_{min}...f_{max}$ )                           | 45...55 Hz/55...65 Hz <sup>3)</sup>                                                                                   |
| Nominal power factor and adjustable range                                | > 0.995, 0...1 inductive/capacitive with maximum $S_{max}$                                                            |
| Total current harmonic distortion                                        | < 3%                                                                                                                  |
| Max DC current injection (% of $I_n$ )                                   | < 0.5%* $I_n$                                                                                                         |
| Maximum AC Cable outer diameter / multi core                             | 1 x 53 mm (1 x M63 cable gland)                                                                                       |
| Maximum AC Cable outer diameter / single core                            | 3 x 32 mm (3 x M40 cable gland)                                                                                       |
| AC connection type <sup>4)</sup>                                         | Copper Busbar for lug connections with M10 bolts (included)                                                           |
| <b>Output protection</b>                                                 |                                                                                                                       |
| Anti-islanding protection                                                | According to local standard                                                                                           |
| Maximum external AC overcurrent protection                               | 200 A                                                                                                                 |
| Output overvoltage protection - replaceable surge protection device      | Type 2 with monitoring                                                                                                |
| <b>Operating performance</b>                                             |                                                                                                                       |
| Maximum efficiency ( $\eta_{max}$ )                                      | 98.7%                                                                                                                 |
| Weighted efficiency (EURO/CEC)                                           | 98.4%                                                                                                                 |
| <b>Communication</b>                                                     |                                                                                                                       |
| Communication interfaces                                                 | 1xRS485, 2x Ethernet (RJ45) <sup>5)</sup>                                                                             |
| Local user interface                                                     | 4 LEDs, Web User Interface, Mobile APP                                                                                |
| Communication protocol                                                   | Modbus RTU/TCP (Sunspec compliant)                                                                                    |
| Commissioning tool                                                       | FIMER Installer for solar inverters mobile app/Embedded Web User Interface                                            |
| Remote monitoring services                                               | Aurora Vision, Plant Portfolio Platform                                                                               |
| Advanced features                                                        | Built-in Export Limitation control algorithm/Integrated data logging for inverters and accessories / Remote FW update |

## Technical data and types

| Type code                                                                                                 | PVS-175-TL                                                                                                                                      |
|-----------------------------------------------------------------------------------------------------------|-------------------------------------------------------------------------------------------------------------------------------------------------|
| <b>Environmental</b>                                                                                      |                                                                                                                                                 |
| Operating ambient temperature range                                                                       | -25...+60°C/-13...140°F with derating above 40°C/133 °F                                                                                         |
| Relative humidity                                                                                         | 4%...100% condensing                                                                                                                            |
| Sound pressure level, typical                                                                             | 65dB(A) @ 1m                                                                                                                                    |
| Maximum operating altitude without derating                                                               | 2000 m / 6560 ft                                                                                                                                |
| <b>Physical</b>                                                                                           |                                                                                                                                                 |
| Environmental protection rating                                                                           | IP 65 (IP54 for cooling section)                                                                                                                |
| Cooling                                                                                                   | Forced air                                                                                                                                      |
| Dimension (H x W x D)                                                                                     | 867x1086x419 mm / 34.2"x42.7"x16.5" for, -SX model<br>867x1086x458 mm / 34.2"x42.7"x18.0" for, -SX2 model                                       |
| Weight                                                                                                    | ~76 kg / 167,5 lbs for power module;<br>~77 kg / 169.7 lbs for Wiring box Overall max ~153 kg / 337.2 lbs                                       |
| Mounting system                                                                                           | Mounting bracket (vertical support only)                                                                                                        |
| <b>Safety</b>                                                                                             |                                                                                                                                                 |
| Isolation level                                                                                           | Transformerless                                                                                                                                 |
| Marking                                                                                                   | CE                                                                                                                                              |
| Safety and EMC standard                                                                                   | IEC/EN 62109-1, IEC/EN 62109-2, EN 61000-6-2,<br>EN 61000-6-4, EN 61000-3-11, EN 61000-3-12, EN 301 489-1, EN 301 489-17, EN 300 328, EN 62311, |
| Grid standard <sup>6)</sup>                                                                               | CEI 0-16, UTE C 15 712-1, JORDAN IRR-DCC-MV and IRR-TIC, BDEW, VDE-AR-N 4110,<br>VDE-AR-N 4120, P.O. 12.3, DRRG D.4, AS/ NZS4777.2              |
| <b>Available product variants</b>                                                                         |                                                                                                                                                 |
| Inverter power module                                                                                     | PVS-175-TL-POWER MODULE                                                                                                                         |
| 24 quick fit connector pairs (2 each MPPT) + DC switches + SPD Type 2 (DC & AC)                           | WB-SX-PVS-175-TL                                                                                                                                |
| 24 quick fit connector pairs (2 each MPPT) + DC switches + AC disconnection switch + SPD Type 2 (DC & AC) | WB-SX2-PVS-175-TL                                                                                                                               |
| <b>Optional available</b>                                                                                 |                                                                                                                                                 |
| DC Series Arc Fault Circuit Interrupter                                                                   | Type I acc. to UL 1699B <sup>3)</sup> with single-MPPT sensing capability                                                                       |
| AC Plate, Single Core Cables                                                                              | Plate with 4 individual AC cable glands: 3 x M40: Ø 22...32mm, 1 x M32: Ø 18...25mm                                                             |
| AC Plate, Multi Core Cables                                                                               | Plate with 2 individual AC cable glands: 1 x M63: Ø 37...53mm, 1 x M32: Ø 18...25mm                                                             |
| Pre-Charge <sup>7)</sup>                                                                                  | Night time operation with restart capability                                                                                                    |
| Anti-PID <sup>8)</sup>                                                                                    | Based on night time polarization of the array                                                                                                   |

- 1) Multicontact MC4-Evo2. Cable couplers may accept up to 10mm<sup>2</sup> (AWG8)
- 2) Available as an option. Performance in line with the relevant requirements of the Draft IEC 63027 standard
- 3) The AC voltage and frequency range may vary depending on specific country grid standard
- 4) Use of aluminum cables is possible via bi-metallic cable lugs
- 5) As per IEEE 802.11 b/g/n standard, 2.4 GHz
- 6) Check your sales channel for availability of the applicable grid standard for your country

- 7) The Inverter cannot verify the photovoltaic array isolation resistance before connection during Night time. When this accessory is present, the inverter must be installed and operate in "restricted areas (access limited to qualified personnel)" according to IEC 62109-2
- 8) Cannot operate simultaneously with the night mode

**Remark. Features not specifically listed in the present data sheet are not included in the product**

# FIMER Medium Voltage Compact Skid IEC version **PVS-175-MVCS**

## up to 6660 kVA

The FIMER medium voltage compact skid is a plug and play solution designed for large-scale solar power generation using PVS-175 high-power string inverters. It includes the medium voltage transformer, the medium voltage switchgear and all low voltage protections needed to connect the inverters to the transformer.

The PVS-175-MVCS is an integrated product specifically engineered for decentralized solar plants realized with FIMER PVS-175 string inverters. The solution allows to connect up to 36 inverters for a maximum power of 6.7MVA.

The MVCS includes an optimized MV oil-immersed transformer, MV gas-insulated switchgear, all necessary LV protections and connections to attach the solar array and a set of available auxiliary services with independent auxiliary power.

All PVS-175-MVCS components ensure the highest standards of quality, performance and durability.

This medium voltage compact skid is used to connect a PV power plant to a MV electricity grid easily and rapidly. To meet the PV power plant's demanded capacity, several FIMER compact skids can be used and connected in any possible manner thanks to the versatility of the integrated MV switchgear.

The compact skid solution has dimensions suitable for transportation inside a closed 20 feet high cube shipping container. The standardized shipping dimensions ensure cost-effective and safe transportability to the site, even overseas.

The solution's optimized cooling, filtering and high environmental protection degree enable installations in a wide span of ambient conditions, from harsh desert temperatures to cold and humid environments. The FIMER medium voltage compact skid is designed for at least 25 years of operation.

### Highlights

- Designed for decentralized systems based on the award-winning 1500 Vdc string inverters PVS-175-TL
- Integrated low voltage distribution panel for a simplified and cost optimized Balance of System (BoS) without the need of additional recombiners
- Quick individual isolation of each feeder, even on-load, for easy and cost-effective maintenance, ensuring maximum uptime
- Individually-protected feeders, enabling separate inverters to be serviced without disrupting the rest of the units connected to the same cluster
- Optimized and very compact layout for integration of all components necessary for medium voltage connection
- Standardized shipping dimensions ensure reduced logistic costs
- Made in Europe product, compatible with most of the world-wide structural regulations and standards
- Vertically integrated product from FIMER, guaranteed by FIMER





## Technical data and types

| Type code                                              | 1850                                              | 2200 | 2590 | 2960 | 3330 | 3700 | 4070 |
|--------------------------------------------------------|---------------------------------------------------|------|------|------|------|------|------|
| Inverter                                               | PVS-175-TL                                        |      |      |      |      |      |      |
| Number of inverters in parallel                        | 10                                                | 12   | 14   | 16   | 18   | 20   | 22   |
| Maximum rating in kVA                                  | 1850                                              | 2200 | 2590 | 2960 | 3300 | 3700 | 4070 |
| <b>LV distribution panel</b>                           |                                                   |      |      |      |      |      |      |
| Number of fused protected feeders                      | 10                                                | 12   | 14   | 16   | 18   | 20   | 22   |
| Fuse rating of feeders                                 | 200 A                                             |      |      |      |      |      |      |
| Breakable on load                                      | Yes                                               |      |      |      |      |      |      |
| Over voltage protection - replaceable surge arrester   | Type 2 (Type 1+2 optional)                        |      |      |      |      |      |      |
| <b>MV transformer</b>                                  |                                                   |      |      |      |      |      |      |
| Transformer type                                       | Oil immersed (ONAN)                               |      |      |      |      |      |      |
| AC Power @ 30° C in kVA                                | 1850                                              | 2200 | 2590 | 2960 | 3300 | 3700 | 4070 |
| AC Power @ 40° C in kVA                                | 1750                                              | 2100 | 2450 | 2800 | 3150 | 3500 | 3850 |
| Low voltage level                                      | 800 V                                             |      |      |      |      |      |      |
| Medium voltage level range                             | ≤ 36kV                                            |      |      |      |      |      |      |
| Rated frequency                                        | 50 Hz or 60 Hz                                    |      |      |      |      |      |      |
| Oil type                                               | Mineral (vegetable optional)                      |      |      |      |      |      |      |
| Tap changer                                            | ± 2 x 2.5%                                        |      |      |      |      |      |      |
| Winding material (primary / secondary)                 | Al / Al                                           |      |      |      |      |      |      |
| Eco efficiency optional                                | Yes                                               |      |      |      |      |      |      |
| <b>MV switchgear</b>                                   |                                                   |      |      |      |      |      |      |
| Switchgear type                                        | SF <sub>6</sub> -insulated                        |      |      |      |      |      |      |
| Rated current                                          | 630 A                                             |      |      |      |      |      |      |
| Configuration                                          | Single (CV) or double feeder (CCV)                |      |      |      |      |      |      |
| Protection (up to 24 kV / up to 36 kV)                 | Circuit breaker (16 kA or 20 kA / 20 kA or 25 kA) |      |      |      |      |      |      |
| Protection relay type                                  | REJ603 (others on request)                        |      |      |      |      |      |      |
| Motorized optional                                     | Yes                                               |      |      |      |      |      |      |
| <b>Auxiliary supply</b>                                |                                                   |      |      |      |      |      |      |
| Auxiliary transformer power                            | 10 kVA (higher on request)                        |      |      |      |      |      |      |
| Auxiliary transformer voltage                          | 800 / 400-230 V                                   |      |      |      |      |      |      |
| Low voltage distribution panel for auxiliary functions | Yes                                               |      |      |      |      |      |      |
| <b>Mechanical characteristics</b>                      |                                                   |      |      |      |      |      |      |
| Dimensions (length x width x height) in mm             | 5700 x 2150 x 2500                                |      |      |      |      |      |      |
| Weight approx. in ton                                  | 9                                                 | 9    | 10   | 10   | 10   | 11   | 11   |
| <b>Environmental</b>                                   |                                                   |      |      |      |      |      |      |
| Operating temperature range                            | -25° C ... +60° C (with derating above 40° C)     |      |      |      |      |      |      |
| Operating altitude range                               | ≤ 2000 m                                          |      |      |      |      |      |      |
| Relative humidity (non-condensing)                     | ≤ 95%                                             |      |      |      |      |      |      |
| Environmental protection rating                        | IP 54                                             |      |      |      |      |      |      |
| Painting corrosion protection                          | C4 (C5M optional)                                 |      |      |      |      |      |      |
| <b>Product compliance</b>                              |                                                   |      |      |      |      |      |      |
| Conformity                                             | IEC 60364, IEC 61936-1, IEC 60502-1               |      |      |      |      |      |      |

## Technical data and types

| Type code                                              | 4440                                              | 4810 | 5180 | 5550 | 5920 | 6290 | 6660 |
|--------------------------------------------------------|---------------------------------------------------|------|------|------|------|------|------|
| Inverter                                               | PVS-175-TL                                        |      |      |      |      |      |      |
| Number of inverters in parallel                        | 24                                                | 26   | 28   | 30   | 32   | 34   | 36   |
| Maximum rating in kVA                                  | 4440                                              | 4810 | 5810 | 5550 | 5920 | 6290 | 6660 |
| <b>LV distribution panel</b>                           |                                                   |      |      |      |      |      |      |
| Number of fused protected feeders                      | 24                                                | 26   | 28   | 30   | 32   | 34   | 36   |
| Fuse rating of feeders                                 | 200 A                                             |      |      |      |      |      |      |
| Breakable on load                                      | Yes                                               |      |      |      |      |      |      |
| Over voltage protection - replaceable surge arrester   | Type 2 (Type 1+2 optional)                        |      |      |      |      |      |      |
| <b>MV transformer</b>                                  |                                                   |      |      |      |      |      |      |
| Transformer type                                       | Oil immersed (ONAN)                               |      |      |      |      |      |      |
| AC Power @ 30° C in kVA                                | 4440                                              | 4810 | 5810 | 5550 | 5920 | 6290 | 6660 |
| AC Power @ 40° C in kVA                                | 4200                                              | 4550 | 4900 | 5250 | 5600 | 5950 | 6300 |
| Low voltage level                                      | 800 V                                             |      |      |      |      |      |      |
| Medium voltage level range                             | ≤ 36kV                                            |      |      |      |      |      |      |
| Rated frequency                                        | 50 Hz or 60 Hz                                    |      |      |      |      |      |      |
| Oil type                                               | Mineral (vegetable optional)                      |      |      |      |      |      |      |
| Tap changer                                            | ± 2 x 2.5%                                        |      |      |      |      |      |      |
| Winding material (primary / secondary)                 | Al / Al                                           |      |      |      |      |      |      |
| Eco efficiency optional                                | Yes                                               |      |      |      |      |      |      |
| <b>MV switchgear</b>                                   |                                                   |      |      |      |      |      |      |
| Switchgear type                                        | SF <sub>6</sub> -insulated                        |      |      |      |      |      |      |
| Rated current                                          | 630 A                                             |      |      |      |      |      |      |
| Configuration                                          | Single (CV) or double feeder (CCV)                |      |      |      |      |      |      |
| Protection (up to 24 kV / up to 36 kV)                 | Circuit breaker (16 kA or 20 kA / 20 kA or 25 kA) |      |      |      |      |      |      |
| Protection relay type                                  | REJ603 (others on request)                        |      |      |      |      |      |      |
| Motorized optional                                     | Yes                                               |      |      |      |      |      |      |
| <b>Auxiliary supply</b>                                |                                                   |      |      |      |      |      |      |
| Auxiliary transformer power                            | 10 kVA (higher on request)                        |      |      |      |      |      |      |
| Auxiliary transformer voltage                          | 800 / 400-230 V                                   |      |      |      |      |      |      |
| Low voltage distribution panel for auxiliary functions | Yes                                               |      |      |      |      |      |      |
| <b>Mechanical characteristics</b>                      |                                                   |      |      |      |      |      |      |
| Dimensions (length x width x height) in mm             | 5700 x 2150 x 2500                                |      |      |      |      |      |      |
| Weight approx. in ton                                  | 12                                                | 12   | 13   | 13   | 14   | 14   | 15   |
| <b>Environmental</b>                                   |                                                   |      |      |      |      |      |      |
| Operating temperature range                            | -25° C ... +60° C (with derating above 40° C)     |      |      |      |      |      |      |
| Operating altitude range                               | ≤ 2000 m                                          |      |      |      |      |      |      |
| Relative humidity (non-condensing)                     | ≤ 95%                                             |      |      |      |      |      |      |
| Environmental protection rating                        | IP 54                                             |      |      |      |      |      |      |
| Painting corrosion protection                          | C4 (C5M optional)                                 |      |      |      |      |      |      |
| <b>Product compliance</b>                              |                                                   |      |      |      |      |      |      |
| Conformity                                             | IEC 60364, IEC 61936-1, IEC 60502-1               |      |      |      |      |      |      |

# FIMER Medium Voltage Compact Skid for US market PVS-175-MVCS up to 5920 kVA

The FIMER medium voltage compact skid is a plug and play solution designed for large-scale solar power generation using PVS-175 high-power string inverters. It includes the medium voltage transformer, integrated medium voltage switch, and all low voltage protections needed to connect the inverters to the transformer.

The PVS-175-MVCS is an integrated product specifically engineered for decentralized solar plants realized with FIMER PVS-175 string inverters.

All PVS-175-MVCS components ensure the highest standards of quality, performance and durability.

This medium voltage compact skid is used to connect a PV power plant to a MV electricity grid easily and rapidly. To meet the PV power plant's demanded capacity, several FIMER compact skids can be used and connected in any possible manner thanks to the versatility of the integrated MV switchgear.

The solution's optimized cooling, filtering and high environmental protection degree enable installations in a wide span of ambient conditions, from harsh desert temperatures to cold and humid environments. The FIMER medium voltage compact skid is designed for at least 25 years of operation.

#### Highlights

- Designed for decentralized systems based on the award-winning PVS-166/175-TL 1500 Vdc string inverters
- Quick individual isolation of each feeder, even on-load, for easy and cost-effective maintenance, ensuring maximum uptime
- Individually-protected feeders, enabling separate inverters to be serviced without disrupting the rest of the units connected to the same cluster
- Optimized and very compact layout for integration of all components necessary for medium voltage connection
- Standardized shipping dimensions ensure reduced logistic costs



# String inverter

## PVS-350-TL

**350 kW**

The new PVS-350-TL by FIMER is designed to satisfy the growing demand of multi-MPPT string inverters for utility PV systems, offering record-high AC capacity combined with a DC front-end optimized for the latest PV modules to maximize the ROI of ground mounted systems based on a decentralized architecture.



### High power density

This new multi-MPPT string inverter with a record-high capacity and power-to-weight ratio exceeding 3kW/kg, delivers up to 350 kVA at 800 Vac. This does not only reduce the logistics and installation costs but also the Electrical Balance of System costs for free field utility-scale ground mounted PV installations. MV stations of up to 15% higher capacity can be combined with PVS-350, increasing the single power block capacity and reducing the overall number of stations per MWac of installed power.

### Future-proof Multi-MPPT 1500 Vdc platform

The inverter comes equipped with 12 MPPTs, each rated 45A Imp and 60A Isc. The MPPT design has been specifically optimized for the connection of 2 strings of the latest ultra-high power PV modules based on M10 (182x182mm) and G12 (210x210mm) cells. The DC/AC ratio can be optimized to fully exploit the benefits of this new module formats while offering maximum system yields ( $\eta_{max} > 99\%$ ), enabling additional cost savings on trackers compared to traditional 166mm modules.

### Installer friendly design

Quick and easy installation, the existing PV module's mounting systems can be used to install the inverters, thus saving time and costs on site preparation and hire of plant. The fuse and combiner free design avoids the need for external components, such as separate DC combiner boxes and AC first level combiners. This is also possible thanks to the integrated DC disconnect switch and to the segregated AC wiring compartment supporting both Al and Cu cables up to 400mm<sup>2</sup>.

### Protect and maximize the efficiency of your assets

Supported by the Aurora Vision cloud platform, the healthy status of the whole PV array can be controlled online through the single string-level I-V curve analysis performed on each inverter. This advanced diagnostic services can be combined with the integrated Arc Fault Detection and PID recovery options, ensuring assets' durability and the profitability of the PV system.

FIMER Digital Platform combining Cloud and Edge Technologies  
The cloud and edge computing capabilities, big data analytics

and FIMER's digital platform can help the customer to solve the challenge of the new digital era.

The FIMER Digital Platform consists of ICT technologies and a full set of functionalities and services properly combined at both cloud and edge level, able to provide the customer with a fully integrated future proof solution characterized by higher performance, higher reliability, maximized cyber security and always aligned with needs and expectations in terms of minimizing Total Cost of Ownership and facilitating maintenance activities in large scale distributed solar generators.

The new FIMER PVS-350 inverter integrates the last standard IP-based technology; in addition, through the integration of an advanced smart cluster-level aggregator gateway many more functionalities and services can be enabled at plant level such as a fully scalable hierarchical plant controlling solution, effective integration with any 3rd party PPC or SCADA system and always according to any modern regulatory norms and grid operators standard (like IEC 61850, IEC 104, etc...). Additional premium services are also available to exploit the smart functionalities integrated in each unit (including DC string diagnosis, prognostic and predictive maintenance, scheduled FW upgrade and remote parameter setting and many others), allowing the system to easily meet the most demanding grid support requirements for systems of any size, as well as enabling both owner and aggregator to play the new solar game in the digital era.

### Highlights

- The most powerful string inverter in Utility (350 kVA); Power to weight ratio > 3kW/kg
- 12 MPPT/45A – Optimized for the latest generation Ultra-High power PV modules (182mm & 210mm)
- Maximum Energy Yield,  $\eta_{max} > 99\%$
- String diagnosis through online IV curve analysis
- Fuse-free design
- Remote firmware upgrade and Multi inverter commissioning
- Segregated AC wiring compartment, support both Al and Cu Cable up to 400mm<sup>2</sup>
- DC Series Arc Fault Circuit Interrupter
- PID recovery function (optional)
- Support Q@night function

## Technical data and types

|                                                                       |                                                          |
|-----------------------------------------------------------------------|----------------------------------------------------------|
| <b>Type code</b>                                                      | PVS-350-TL                                               |
| <b>Input side</b>                                                     |                                                          |
| Absolute maximum DC input voltage ( $V_{max,abs}$ )                   | 1500 V                                                   |
| Start-up DC input voltage ( $V_{start}$ )                             | 600...1000 V                                             |
| Operating DC input voltage range ( $V_{dcmin}...V_{dcmax}$ )          | 0.7 x $V_{start}$ ...1500 V (min 500 V)                  |
| Rated DC input voltage ( $V_{dcr}$ )                                  | 1080 V                                                   |
| Number of independent MPPT                                            | 12                                                       |
| Maximum DC input current for each MPPT ( $I_{MPPT,max}$ )             | 45 A                                                     |
| Maximum input short circuit current for each MPPT                     | 60 A                                                     |
| Number of DC inputs pairs for each MPPT                               | 2                                                        |
| DC connection type                                                    | MC4-Evo2                                                 |
| <b>Input protection</b>                                               |                                                          |
| DC Series Arc Fault Circuit Interrupter                               | Standard                                                 |
| Reverse polarity protection                                           | Yes, from limited current source                         |
| Input over voltage protection for each MPPT - Type 2 surge arrester   | Yes, with monitoring                                     |
| Input over voltage protection for each MPPT - Type 1+2 surge arrester | Optional, with monitoring                                |
| Photovoltaic array isolation control (Insulation Resistance)          | Yes, acc. to IEC 62109-2                                 |
| Residual Current Monitoring Unit (leakage current protection)         | Yes, acc. to IEC 62109-2                                 |
| DC switch                                                             | Yes                                                      |
| String current monitoring                                             | Yes                                                      |
| <b>Output side</b>                                                    |                                                          |
| AC grid connection type                                               | Three phase 3W+PE                                        |
| Rated AC power ( $P_{ac,r}$ )                                         | 333000 W                                                 |
| Maximum AC output power ( $P_{ac,max}$ @ $\cos\phi=1$ )               | 350000 W                                                 |
| Maximum apparent power ( $S_{max}$ )                                  | 350000 VA                                                |
| Rated AC grid voltage ( $V_{ac,r}$ )                                  | 800 V                                                    |
| Rated AC output current ( $I_{ac,max}$ )                              | 240.3 A                                                  |
| Maximum AC output current ( $I_{ac,max}$ )                            | 253 A                                                    |
| Rated output frequency (f)                                            | 50 Hz / 60 Hz                                            |
| Nominal power factor and adjustable range                             | > 0.995, 0.8 inductive/capacitive with maximum $S_{max}$ |
| Total current harmonic distortion                                     | < 3%                                                     |
| Max DC Current Injection (% of $I_n$ )                                | < 0.5% $I_n$                                             |
| Maximum AC Cable / single core (multi core)                           | 4x1x400mm <sup>2</sup> (4x300mm <sup>2</sup> )           |
| AC connection type                                                    | Type Terminal block M12 cable lug                        |
| <b>Output protection</b>                                              |                                                          |
| Anti-islanding protection                                             | According to local standard                              |
| Output overvoltage protection - Type 2 surge protection device        | Yes, with monitoring                                     |
| <b>Operating performance</b>                                          |                                                          |
| Maximum efficiency ( $\eta_{max}$ )                                   | ≥99.02 %                                                 |
| Weighted efficiency (EURO)                                            | ≥98.85 %                                                 |
| <b>Communication</b>                                                  |                                                          |
| Communication interface                                               | Ethernet, RS-485                                         |
| Local user interface                                                  | 4 LEDs, Web User Interface, Mobile APP                   |
| Communication protocol                                                | Modbus RTU/TCP (Sunspec compliant)                       |
| Commissioning tool                                                    | Web User Interface / Mobile APP                          |
| Monitoring                                                            | Plant Portfolio Platform                                 |
| FW update                                                             | locally/remotely                                         |
| Parameter upgrade                                                     | interface locally/remotely                               |
| <b>Environmental</b>                                                  |                                                          |
| Operating ambient temperature range                                   | -25...+60°C                                              |
| Relative humidity                                                     | 4%...100% condensing                                     |
| Maximum operating altitude                                            | 4000 m                                                   |



## Technical data and types

|                                   |                                                                          |
|-----------------------------------|--------------------------------------------------------------------------|
| <b>Type code</b>                  | PVS-350-TL                                                               |
| <b>Physical</b>                   |                                                                          |
| Environmental protection rating   | IP 66                                                                    |
| Cooling                           | Forced air cooling                                                       |
| Dimension (H x W x D)             | 740 x 1100 x 490 mm                                                      |
| Weight                            | ≤110kg                                                                   |
| <b>Safety</b>                     |                                                                          |
| Isolation level                   | Transformerless                                                          |
| Marking                           | CE                                                                       |
| Safety and EMC standard (planned) | IEC/EN 62109-1, IEC/EN 62109-2, EN 61000-6-2, EN 61000-6-4, EN55011:2017 |
| <b>Optional available</b>         |                                                                          |
| Online IV curve analysis          | Optional                                                                 |
| Q@night                           | Optional                                                                 |
| PID Recovery                      | Optional                                                                 |

Notes:

- 1) External AC protection is mandatory

# String inverter Medium Voltage Modular Compact Skid **PVS-260/300-MVMCS**

**6300 to 7200 kW**

The new FIMER medium voltage modular compact skid is a plug&play solution designed to seamlessly and efficiently replace monolithic converter solutions on large-scale solar power generation systems based on a centralized architecture. Combining up to 24 single MPPT power conversion modules in a fully-equipped factory pre-assembled and pretested 40 feet HC MV station, the new platform can compete with multi-MW scale station designs of the latest central inverters, allowing system designers to apply the modular architecture to systems of any kind and any size.



### **Centralized System Architecture / Modular Conversion Core**

The PVS-260/300-MVMCS is an integrated product specifically engineered for utility-scale PV systems adopting a centralized system architecture.

The PVS-260/300-MVMCS is modular in nature. Indeed, the system includes up to 24 single MPPT independent PVS-260/300 power conversion modules, arranged in a fully-equipped factory pre-assembled and pretested 40 feet HC MV station with a total MVA capacity as high as 7200 kVA. Designed to seamlessly and efficiently replace monolithic converter solutions on large-scale solar power generation systems, this solution outperforms any conventional central system, allowing PV designers to extend the benefits of modular conversion to systems of any kind and any size.

#### **The benefits of Modular Conversion: lower LCOE**

The PVS-260/PVS-300-MVMCS by FIMER makes it possible to align the capital costs of a modular solution with those of a centralized system, while ensuring the following benefits that are typical of a modular conversion solution:

- Higher system availability, above 99.9% compared to 99.5% maximum from central solutions, thanks to the inherent fault tolerance and reduced MTTR guaranteed by modular conversion.
- Lower O&M efforts thanks to the granularity of power conversion accomplished with smaller and swappable power blocks. Depending on site-specific conditions this achieves a remarkable 1.5 to 2.5 percent reduction on the LCOE of a modular conversion architecture compared to a central solution. Moreover, all power electronics is concentrated nearby the other critical AC power assets to simplify the control and routine maintenance.

#### **Fully equipped and engineered by FIMER**

The solution's optimized cooling, filtering and high environmental protection degree allow its installation in a wide span of environmental conditions, from harsh desert temperatures to cold and humid environments.

The MVMCS includes an optimized MV oil-immersed transformer, MV gas-insulated switchgear, all necessary LV protections and connections to the (up to) 24 conversion modules and a set of available auxiliary services with independent auxiliary power. Depending on the number of conversion modules, the MVMCS provides up to 24 independent MPPTs and direct connection to the up to 24 individual DC cable pairs coming from the DC recombiner boxes. All components are part of the FIMER portfolio, ensuring the highest standards of quality, performance and durability.

### **Unmatched flexibility and scalability**

Thanks to its inherent granularity, the MVMCS provides an un-matched scalability to adapt to systems of any size, any type. This medium voltage compact skid is used to connect a PV power plant to a MV electricity grid easily and rapidly. To meet the PV power plant's demanded capacity, several FIMER compact skids can be used and connected thanks to the versatility of the integrated MV switchgear.

### **Reduced logistic costs**

The compact skid solution is suitable for transportation inside a closed 40 feet high cube shipping container. The standardized shipping dimensions ensure cost-effective and safe transportability to the site, even overseas.

### **Highlights**

- Designed for centralized systems based on up to 24 units of the record-high power capacity (260/300 kVA) and power density 1500 Vdc single-MPPT conversion modules PVS-260/300.
- Integrated low voltage distribution panel for a simplified and cost optimized Balance of System (BoS) without the need for any additional recombiners.
- Quick individual isolation of each conversion module, even on-load, for easy and cost-effective maintenance, ensuring maximum uptime.
- Individually-protected feeders, enabling separate inverters to be serviced without disrupting the rest of the units connected to the same cluster.
- DC connection cabinet for up to 24 individual DC home runs (support 400mm<sup>2</sup> Al cable).
- Optimized and very compact layout for integration of all components necessary for medium voltage connection.
- Standardized shipping dimensions ensure reduced logistic costs.
- Made in Europe product, compatible with most of the world-wide structural regulations and standards.
- Vertically integrated product manufactured by FIMER, guaranteed by FIMER.

## Technical data and types

| Maximum rating in KVA                                         | Up to 6300                                                 | Up to 7200                |
|---------------------------------------------------------------|------------------------------------------------------------|---------------------------|
| <b>Inverter</b>                                               |                                                            |                           |
| Inverter module                                               | PVS-260-TL                                                 | PVS-300-TL                |
| Number of inverter modules                                    |                                                            | Up to 24                  |
| Number of independent MPPT                                    |                                                            | Up to 24                  |
| Absolute maximum DC input voltage ( $V_{max,abs}$ )           |                                                            | 1500 V                    |
| Operating DC input voltage range ( $V_{dcmin}...V_{dcmax}$ )  | 850...1500 V                                               | 978...1500 V              |
| Maximum DC input current for each MPPT ( $I_{MPPTmax}$ )      |                                                            | 325 A                     |
| Maximum input short circuit current for each MPPT             |                                                            | 700 A                     |
| Number of DC inputs pairs for each MPPT                       |                                                            | 2                         |
| DC connection type                                            | Type Terminal block M12 cable lug up to 400mm <sup>2</sup> |                           |
| AC output voltage                                             | 600 V                                                      | 690 V                     |
| <b>LV distribution panel</b>                                  |                                                            |                           |
| Number of fused protected feeders                             |                                                            | Up to 24                  |
| Fuse rating of feeders                                        |                                                            | 350 A                     |
| Breakable on load                                             |                                                            | Yes                       |
| Over voltage protection – Type 2 replaceable surge arrester   |                                                            | Yes, with monitoring      |
| Over voltage protection – Type 1+2 replaceable surge arrester |                                                            | Optional, with monitoring |
| <b>MV Transformer</b>                                         |                                                            |                           |
| Transformer type                                              | Sealed oil immersed (ONAN)                                 |                           |
| Maximum AC power                                              | Up to 6300 kVA                                             | Up to 7200 kVA            |
| Rated Low voltage level                                       | 600 V                                                      | 690 V                     |
| Rated Medium voltage level                                    |                                                            | ≤ 36 kV                   |
| Rated frequency                                               |                                                            | 50 Hz / 60 Hz             |
| Oil type                                                      | Mineral (Vegetable as an option)                           |                           |
| Tap changer                                                   |                                                            | ± 2 x 2.5%                |
| Windings material (primary / secondary)                       |                                                            | Al / Al                   |
| ECO efficiency                                                |                                                            | Optional                  |
| <b>MV switchgear</b>                                          |                                                            |                           |
| Switchgear type                                               | SF6 - Insulated                                            |                           |
| Rated current                                                 | 630 A                                                      |                           |
| Configuration                                                 | Single feeder (CV) or double feeder (CCV)                  |                           |
| Protection (up to 24 kV / up to 36 kV)                        | Circuit Breaker (16 kA or 20 kA / 20 kA or 25 kA)          |                           |
| Protection relay                                              | ABB REJ603 or equivalent (others on request)               |                           |
| Motorization                                                  | Optional                                                   |                           |
| <b>Auxiliary supply</b>                                       |                                                            |                           |
| Auxiliary supply transformer power                            | 10 kVA (higher on request)                                 |                           |
| Auxiliary transformer voltage                                 | 600 V / 400-230 V                                          | 690 V / 400-230 V         |
| Low voltage distribution panel for auxiliary functions        | Yes                                                        |                           |
| <b>Mechanical characteristics</b>                             |                                                            |                           |
| Dimensions (length x width x height) in mm                    | 11400 x 2150 x 2500                                        |                           |
| <b>Environmental</b>                                          |                                                            |                           |
| Operating ambient temperature range                           | -25...+60° C                                               |                           |
| Operating altitude range                                      | ≤ 2000 m                                                   |                           |
| Relative humidity (non -condensing)                           | ≤ 95%                                                      |                           |
| Environmental protection rating                               | IP 54 (IP66 for inverters)                                 |                           |
| Painting corrosion protection                                 | C4 (C5M optional)                                          |                           |
| <b>Product compliance</b>                                     |                                                            |                           |
| Conformity                                                    | IEC 60364, IEC 61936-1, IEC 60502-1                        |                           |

# String inverter

## PVS-260/300-TL

**262,5 to 300 kW**

The new PVS-260/300-TL is the innovative single-MPPT converter by FIMER that forms the basic building block of a new generation of modular converter solutions for utility PV systems, offering record-high AC capacity and power-to-weight ratio to enable the integration of utility-scale ground mounted PV systems based on a centralized modular architecture.



### High power density

This new single-MPPT string inverter with a record-high capacity and power-to-weight ratio exceeding 3kW/kg, delivers up to 300 kVA (260 kVA) at 690 Vac (600 Vac). This not only reduces the logistics and installation costs but also the Electrical Balance of System costs for free field utility-scale ground mounted PV installations. MV stations of up to 7200 KVA capacity can be combined with 24 units of PVS-300, increasing the single power block to reach the same capacity of the latest central monolithic solutions within the same physical size, providing all the benefits of a modular conversion at an equivalent initial cost.

### Reduced O&M cost

The granularity of the power conversion is accomplished with smaller capacity and swappable power blocks that ensure minimal MTTR and reduced labor cost compared to the on-site repairs of central inverter solutions.

### Maximum Energy Yield

With a maximum efficiency exceeding 99% and weighted efficiency above 98.8%, the PVS-260/300-TL is on the leading edge of the power conversion technology applied to PV systems, offering the maximum energy yield to utility-scale systems of any size.

This is combined with the highest availability exceeding 99.9% compared to 99.5% maximum from monolithic MW-scale inverters, thanks to the inherent fault tolerance, reduced MTTR and easy/low labor cost guaranteed by the swappable modular converters which further contributes to preserve the optimal system yield and maximum ROI.

### Protect and maximize the efficiency of your assets

Advanced inverter diagnostic and prognostic services can be combined with PID recovery options, ensuring your assets and profitability are secured throughout the entire PV system operating life.

### FIMER Digital Platform

Thanks to cloud and edge computing capabilities, big data analytics and AI the FIMER digital platform can help customers to solve the challenge of the new digital era.

The FIMER Digital Platform consists of ICT technologies and a full set of functionalities and services properly combined at both cloud and edge level able to provide customers with a fully integrated future-proof solution characterized by higher performance, higher reliability, maximized cyber security and always aligned with needs and expectations in terms of minimizing Total Cost of Ownership and facilitating maintenance activities in large scale distributed solar generators.

The new FIMER PVS-260/300 inverter integrates the last standard IP-based technology; in addition, through the integration of an advanced smart cluster-level aggregator gateway, many more functionalities and services can be enabled at plant level such as a fully scalable hierarchical plant controlling solution, effective integration with any 3rd party PPC or SCADA system and always according to any modern regulatory norm and grid operator standard (like IEC 61850, IEC 104, etc...).

Additional premium services are also available to exploit the smart functionalities integrated in each unit (including diagnosis, prognostic and predictive maintenance, scheduled FW upgrade and remote parameter's setting and many others), allowing the system to easily meet the most demanding grid support requirements for systems of any size, as well as to enable both owner and aggregator to play the new solar game in the digital era.

### Highlights

- The most powerful single-MPPT string inverter in Utility (300 kVA); Power to weight ratio > 3kW/kg
- Optimized for the integration of Utility PV systems based on centralized architecture with modular converters
- Maximum Energy Yield,  $\eta_{MAX} > 99\%$
- Remote firmware upgrade and Multi inverter commissioning
- Segregated DC & AC wiring compartment, support both Al and Cu Cable up to 400mm<sup>2</sup>
- PID recovery function (optional)
- Support Q@night function

## Technical data and types

| Type code                                                      | PVS-260-TL                                                               | PVS-300-TL   |
|----------------------------------------------------------------|--------------------------------------------------------------------------|--------------|
| <b>Input side</b>                                              |                                                                          |              |
| Absolute maximum DC input voltage ( $V_{max,abs}$ )            |                                                                          | 1500 V       |
| Operating DC input voltage range ( $V_{dc,min}...V_{dc,max}$ ) | 850...1500 V                                                             | 978...1500 V |
| Number of independent MPPT                                     |                                                                          | 1            |
| Maximum DC input current ( $I_{MPP,Tmax}$ )                    |                                                                          | 325 A        |
| Maximum input short circuit current                            |                                                                          | 700 A        |
| Number of DC inputs pairs                                      |                                                                          | 2            |
| DC connection type                                             | Type Terminal block M12 cable lug up to 400mm <sup>2</sup>               |              |
| <b>Input protection</b>                                        |                                                                          |              |
| Reverse polarity protection                                    | Yes, from limited current source                                         |              |
| Input over voltage protection - Type 2 surge arrester          | Yes, with monitoring                                                     |              |
| Input over voltage protection - Type 1+2 surge arrester        | Optional, with monitoring                                                |              |
| Photovoltaic array isolation control (Insulation Resistance)   | Yes, acc. to IEC 62109-2                                                 |              |
| Residual Current Monitoring Unit (leakage current protection)  | Yes, acc. to IEC 62109-2                                                 |              |
| <b>Output side</b>                                             |                                                                          |              |
| AC Grid connection type                                        | Three phase 3W+PE                                                        |              |
| Rated AC power ( $P_{ac,r}$ )                                  | 238700 W                                                                 | 273000 W     |
| Maximum AC output power ( $P_{ac,max} @ \cos\phi=1$ )          | 262500 W                                                                 | 300000 W     |
| Maximum apparent power ( $S_{max}$ )                           | 262500 VA                                                                | 300000 VA    |
| Rated AC grid voltage ( $V_{ac,r}$ )                           | 600 V                                                                    | 690 V        |
| Rated AC output current ( $I_{ac,max}$ )                       | 229.7 A                                                                  | 228.5A       |
| Maximum AC output current ( $I_{ac,max}$ )                     |                                                                          | 253 A        |
| Rated output frequency ( $f_r$ )                               | 50 Hz / 60 Hz                                                            |              |
| Nominal power factor and adjustable range                      | > 0.995, 0.8 inductive/capacitive with maximum $S_{max}$                 |              |
| Total current harmonic distortion                              | < 3%                                                                     |              |
| Max DC Current Injection (% of $I_n$ )                         | < 0.5%* $I_n$                                                            |              |
| Maximum AC Cable / single core (multi core)                    | 4x1x400mm <sup>2</sup> (4x300mm <sup>2</sup> )                           |              |
| AC connection type                                             | Type Terminal block M12 cable lug                                        |              |
| <b>Output protection</b>                                       |                                                                          |              |
| Anti-islanding protection                                      | According to local standard                                              |              |
| Output overvoltage protection - Type 2 surge protection device | Yes, with monitoring                                                     |              |
| <b>Operating performance</b>                                   |                                                                          |              |
| Maximum efficiency ( $\eta_{max}$ )                            | ≥99.02                                                                   |              |
| Weighted efficiency (EURO/CEC)                                 | ≥98.85                                                                   |              |
| <b>Communication</b>                                           |                                                                          |              |
| Communication interface                                        | Ethernet, RS-485                                                         |              |
| Local user interface                                           | 4 LEDs, Web User Interface, Mobile APP                                   |              |
| Communication protocol                                         | Modbus RTU/TCP (Sunspec compliant)                                       |              |
| Commissioning tool                                             | Web User Interface / Mobile APP                                          |              |
| Monitoring                                                     | Plant Portfolio Platform                                                 |              |
| FW update                                                      | locally/remotely                                                         |              |
| Parameter upgrade                                              | locally/remotely                                                         |              |
| <b>Environmental</b>                                           |                                                                          |              |
| Operating ambient temperature range                            | -25...+60°C                                                              |              |
| Relative humidity                                              | 4%...100% condensing                                                     |              |
| Maximum operating altitude                                     | 4000 m                                                                   |              |
| <b>Physical</b>                                                |                                                                          |              |
| Environmental protection rating                                | IP 66                                                                    |              |
| Cooling                                                        | Forced air cooling                                                       |              |
| Dimension (H x W x D)                                          | 700 x 950 x 450 mm                                                       |              |
| Weight                                                         | ≤100kg                                                                   |              |
| <b>Safety</b>                                                  |                                                                          |              |
| Isolation level                                                | Transformerless                                                          |              |
| Marking                                                        | CE                                                                       |              |
| Safety and EMC standard (planned)                              | IEC/EN 62109-1, IEC/EN 62109-2, EN 61000-6-2, EN 61000-6-4, EN55011:2017 |              |
| Grid standard (check your sales channel for availability)      | TBC                                                                      |              |
| <b>Option available</b>                                        |                                                                          |              |
| Q@night                                                        | Optional                                                                 |              |
| PID Recovery                                                   | Optional                                                                 |              |



**With the new PVS-350  
and PVS-260/300,  
FIMER offers the best  
solutions for both  
decentralized and  
centralized applications,  
covering 100% of  
Utility-scale needs**



# PVS string inverters

## digital capabilities

FIMER PVS string inverters comes with all the digital capabilities and functionalities enabled by the new FIMER digital communication platform allowing great advantages in terms of smart grid integration and controlling as well as reducing time spent on site..

### **“All-in-one” solution**

The digital technologies of the string inverters allow the electric grid to better adapt to the dynamic behavior of renewable energy and distributed generation, helping both consumers and utilities to access these resources and harvest their benefits from remote. The string inverters features natively the proven standard TCP/IP technology and the open and widely used Modbus RTU and TCP Sunspec allowing customer to easy integrate the inverter with any modern systems in range of IoT and in compliance with modern regulatory norms worldwide.

The integrated data logging capabilities, the direct transferring of telemetry data to the cloud via Internet and the innovative built-in distributed control algorithm allow

meeting any limit to the plant exported power at the point of connection. There is no need of using any additional device beyond the inverter which ensures maximum flexibility in plant designing and reduces the complexity of the plant dramatically. Consequently, it increases the PV plant's reliability.

### **Highlights**

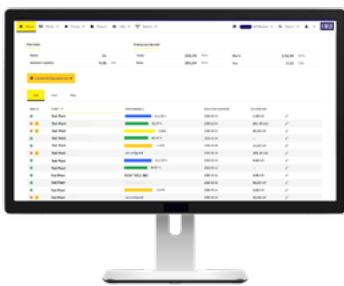
- Protecting customer's investment
- Reduced plant complexity and increased reliability
- Minimum TCO
- Improved user experience
- Support to cross-sector integration
- IoT ready

# Monitoring and control solutions



# Aurora Vision®

Aurora Vision® is a scalable, secure and reliable cloud-based platform that allows customers to remotely manage and analyze the main key performance indicators of their solar power plants as well as use advanced diagnostics tools, in all market segments. This cloud-based solution, accessible through an Aurora Vision® account, is structured to offer multiple services and products all designed with specific customer needs in mind:



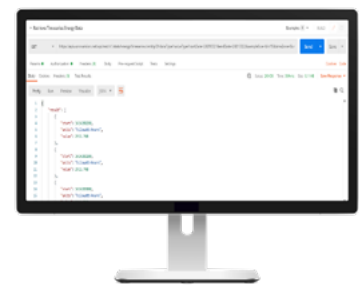
## Plant Portfolio Manager

An advanced professional webportal that allows stakeholders (such as installers/ operators/ managers) to monitor and control fleets of photovoltaic systems installed for final customers.



## Energy Viewer

A smart and easy-to-use mobile app for monitoring the main power generation and self-performances indicators, for owners of residential and commercial PV plants, in order to keep energy use and savings in check.



## Aurora Vision® APIs

Harness the power of data from FIMER's photovoltaic systems to design solutions and provide opportunities.

### Monitoring to improve your productivity

Real-time data acquisition, early fault detection and Email alerting are some of the key features that will help to optimize the average repair time of a solar system.

Thanks to the granularity of the string-level monitoring and intelligent fault descriptions, detailed analyses can be extrapolated that lead to the type of repair needed by also determining the potential spare parts to be used, thus minimizing inconclusive interventions.

With the availability of professional diagnostic tools such as Plant Performance and Assets Diagnostic charts that have been carefully designed, combined with comprehensive asset management and the ability to perform remote firmware upgrades, it is easy to positively impact maintenance operations thus optimizing costs and providing great benefits in terms of customer satisfaction.

Finally, thanks to the administration tools, solar professionals can administer an entire portfolio of solar plants by managing both the lifecycle of solar assets and the accounts of employees and customers.

### Versatility to achieve energy independence

Aurora Vision's versatility and cross-integration allows homeowners to benefit directly from the platform, simply by choosing to self-register their PV system or by having their solar power plant registration handled directly by their trustworthy installer.

Everything is easily accessible through iOS and/or Android systems (both tablets and smartphones) without the need to install any additional software or perform data back-ups; by leveraging the power of FIMER inverter data everything is managed through the Aurora Vision® cloud-based platform. The products provided are designed with modular and easy-to-use dashboards, offering all the main data at your fingertips.

Users can therefore start to optimize their own self-performances, leading to have a clear assessment of all energy flows and household consumption.

# Export limitation solution

The new generation of FIMER PVS-string inverters is even more smart thanks to the innovative built-in distributed control algorithm which allows meeting export limits without the need of installing any additional system or device\*.

The new innovative FIMER Export limitation solution allows solar plant owners to get the maximum energy from their inverters, without needing to invest in additional external systems, and is compliant with the export limits set by grid operators and utilities worldwide. It is the only IP based solution currently on the market\*\* that does not require the installation of any additional components besides PVS series string inverters and a supported and standard modbus meter, allowing for great advantage in terms of both investments and ownership costs, plant reliability and system complexity.

All PVS series string inverters come with an innovative distributed control algorithm built-in which, once quickly configured through the Installer for solar inverters app set-up wizard, allows the entire plant to dynamically follow the load curves in compliance with the most restrictive regularity norms worldwide.

To get the solution properly configured and working, the supported standard meter needs to be installed at the point of connection and paired to the inverters just once, by either direct RS-485 serial line, to the inverter's serial port, or over

Ethernet (Local Area Network).

According to the specific meter installed, the new FIMER export limitation algorithm can work indistinctly in small commercial installations, with just a few inverters connected to the low voltage stage, as well as in a large commercial/utility-scale plants, where up to maximum 15 units (a higher number of units may be authorized upon request) per plant are connected to the grid by middle voltage stage.

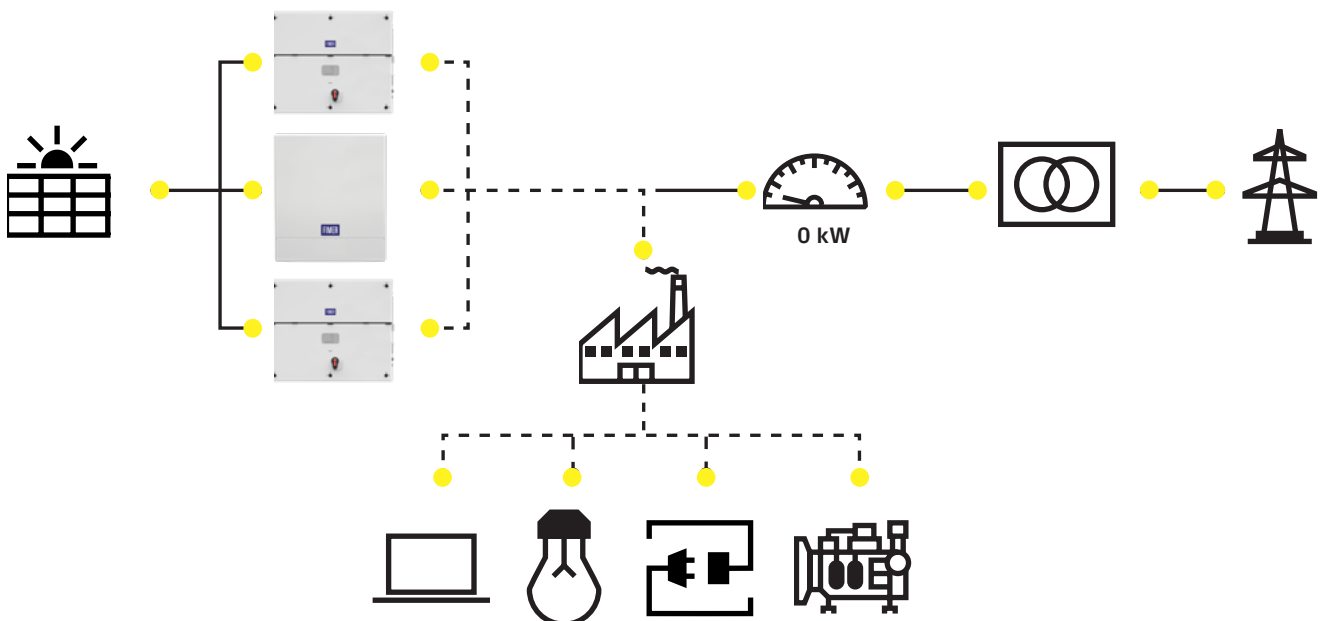
## Highlights

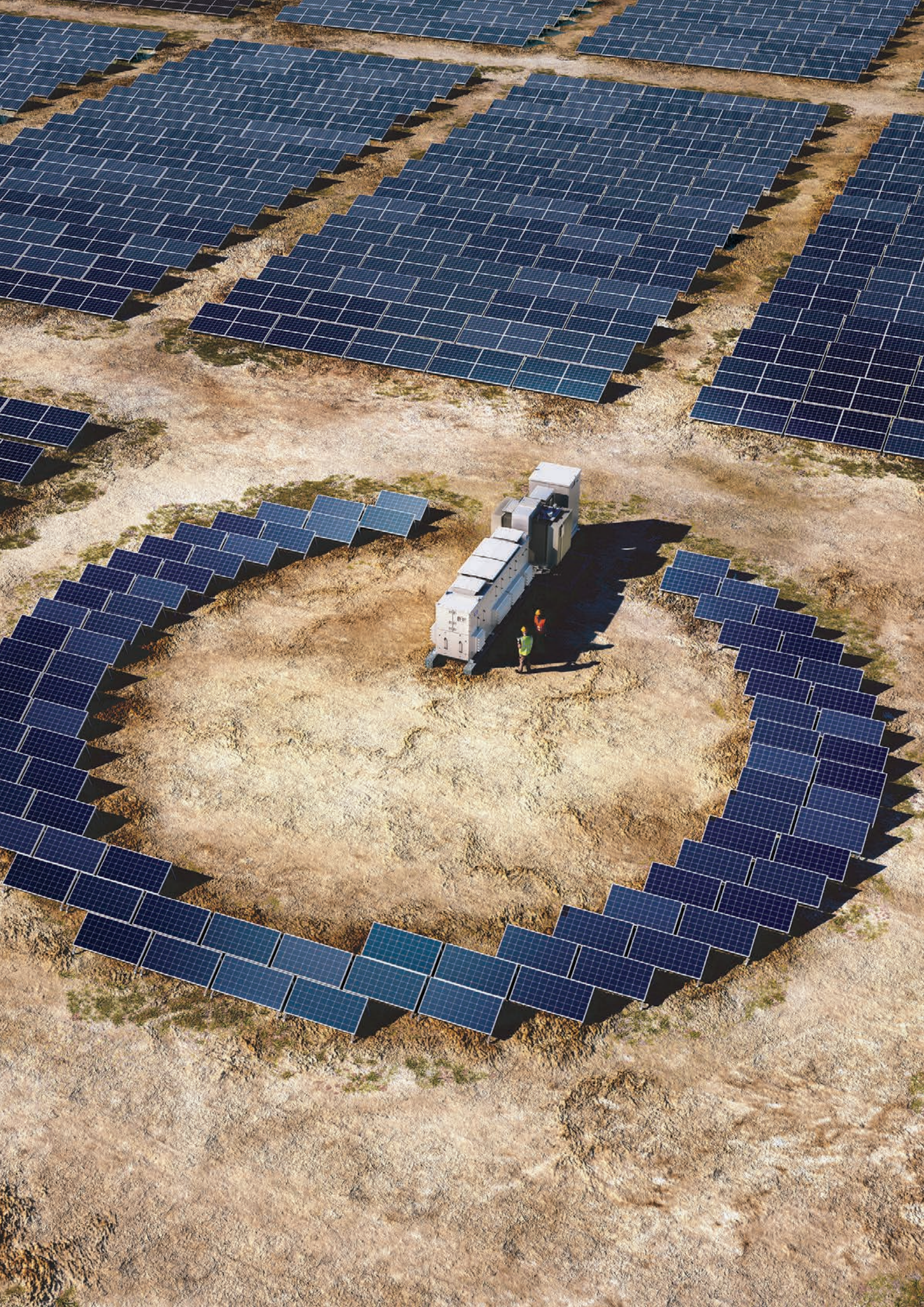
- IP based solution
- Distributed control algorithm built-in the inverter just standard meter needed and no external controller required
- PVS string inverters supported (15 units per plant)
- Just a standard Modbus meter (either RS-485 or Ethernet) needed
- System setting through the Installer for solar inverters mobile app
- Fully integrated with Aurora Vision cloud
- Control can be activated on both low and medium point of connection
- High performance control solution
- Compliant with modern regulatory norms worldwide (such as: AS/NZS 4777.2:2015, G100, Thailand MEA)
- Failsafe mechanism allow to respect of the limit set at the energy exported to grid even in case of fault occurred to the inverter or meter

\* With the exception of a standard Modbus meter from the ones supported.

\*\* To date

\*\*\* 40 units achievable on request





# FIMER central inverter solutions

FIMER's offering includes highly cost-effective and performant central inverters as well as complete plug and play stations with inverters and medium voltage (MV) components for an attractive return on investment.

## Central inverters for maximized total efficiency

FIMER's central inverter portfolio is based on decades of experience with power converting technology, which has been custom adapted for the PV business.

This ensures that the product itself, and the processes to support it over the plant lifetime, are optimized and offer a truly bankable solution.

The central inverter's industrial design and modularity combined with FIMER's life cycle service approach simplify the operation of the inverters. This assures maximum uptime of the plant and highest return on your investment.

The high efficiency, together with high reliability and extremely low auxiliary power consumption give investors maximized total efficiency over the lifetime of the plant

### Highlights

- Power ratings up to 5000 kVA
- 1000 V and 1500 Vdc input voltage
- All-in-one design approach to reduce the amount of external components needed

## Central inverter solutions for high performance

FIMER's central inverter solutions are designed for large multi-megawatt PV power plants and are most cost-effective by feeding electricity directly to the to the MV grid.

The components' compatibility ensures highest standards of quality, performance and durability.

The complete plug and play stations are available in different designs, to provide the most feasible solutions for every weather and site condition.

### Highlights

- Plug and play solutions with ratings up to 5000 kVA
- Customized solutions with ratings up to 10000 kVA
- Standardized shipping dimensions to ensure cost-effective and safe transportability



# FIMER central inverter (1500 Vdc) PVS980-58

## up to 5000 kVA

The new high power FIMER central inverters raise the performance, cost efficiency and ease of installation to new levels. The inverters are aimed at system integrators and end users who require high-performance solar inverters for large photovoltaic (PV) power plants, and are optimized for multi-megawatt power plants.

### World's leading inverter platform

Like other FIMER central inverters, the PVS980-58 has been developed on the basis of decades of experience in the industry and proven technology platform. Unrivalled expertise from the world's market and technology leader in frequency converters is the hallmark of this solar inverter series.

The PVS980-58 inverter is one of the most efficient and cost-effective ways of converting the direct current (DC) generated by solar modules into high quality and CO<sub>2</sub>-free alternating current (AC) that can be fed into the power distribution network.

### PVS980-58 central inverters from FIMER

FIMER PVS980-58 central inverters are ideal for large PV power plants. The high DC input voltage, high efficiency, proven components, compact and modular design and a host of life cycle services ensure FIMER PVS980-58 central inverters provide a rapid return on investment. New extended power range along with fast site installation raises the total cost efficiency to a new level.

### Highlights

- High total performance
- Modular product design
- High DC input voltage up to 1500 VDC
- Extensive DC and AC side protection
- Easy to commission, no separate chiller installation
- Fast and easy AC coupling to transformer by busbars
- Versatile design for large-scale PV plants to minimize system costs
- Complete range of industrial data communication options including remote monitoring
- Life cycle service and support through FIMER's extensive global service network





## Technical data and types

| Product<br>Type designation, PVS980-58                                     | PVS980-58 4.3 MVA<br>-4348kVA-I | PVS980-58 4.6 MVA<br>-4565kVA-J | PVS980-58 4.8 MVA<br>-4782kVA-K | PVS980-58 5.0 MVA<br>-5000kVA-L |
|----------------------------------------------------------------------------|---------------------------------|---------------------------------|---------------------------------|---------------------------------|
| <b>Input (DC)</b>                                                          |                                 |                                 |                                 |                                 |
| Maximum recommended input power (PPV,max) <sup>1)</sup>                    | 8696 kWp                        | 9130 kWp                        | 9564 kWp                        | 10000 kWp                       |
| Maximum DC short circuit current                                           | 16 kA                           |                                 |                                 |                                 |
| Maximum operational DC current                                             | 5300 A                          |                                 |                                 |                                 |
| Maximum operational DC voltage (U <sub>max</sub> (DC)) <sup>2)</sup>       | 1500 V                          |                                 |                                 |                                 |
| DC voltage range for maximum power (U <sub>dc, mpp</sub> ) @ -20 to +25 °C | 850 to 1350 V                   | 893 to 1350 V                   | 935 to 1350 V                   | 978 to 1350 V                   |
| DC voltage range for maximum power (U <sub>dc, mpp</sub> ) @ 35 °C         | 850 to 1250 V                   | 893 to 1250 V                   | 935 to 1250 V                   | 978 to 1250 V                   |
| DC voltage range for maximum power (U <sub>dc, mpp</sub> ) @ 50 °C         | 850 to 1100 V                   | 893 to 1100 V                   | 935 to 1100 V                   | 978 to 1100 V                   |
| Number of MPPT trackers                                                    | 1                               |                                 |                                 |                                 |
| Number of protected DC inputs <sup>3)</sup>                                | 20-36 (+/-)                     |                                 |                                 |                                 |
| <b>Output (AC)</b>                                                         |                                 |                                 |                                 |                                 |
| Power @ 25 °C                                                              | 4348 kVA                        | 4565 kVA                        | 4782 kVA                        | 5000 kVA                        |
| AC current @ 25 °C                                                         | 4184 A                          |                                 |                                 |                                 |
| Power @ 35 °C                                                              | 4229 kVA                        | 4441 kVA                        | 4652 kVA                        | 4864 kVA                        |
| AC current @ 35 °C                                                         | 4070 A                          |                                 |                                 |                                 |
| Power (S <sub>N(AC)</sub> ) @ 50 °C                                        | 3845 kVA                        | 4037 kVA                        | 4229 kVA                        | 4421 kVA                        |
| AC current (I <sub>N(AC)</sub> ) @ 50 °C                                   | 3700 A                          |                                 |                                 |                                 |
| Nominal output voltage (U <sub>N(AC)</sub> ) <sup>4)</sup>                 | 600 V                           | 630 V                           | 660 V                           | 690 V                           |
| Output frequency <sup>5)</sup>                                             | 50/60 Hz                        |                                 |                                 |                                 |
| Harmonic distortion, current <sup>6)</sup>                                 | < 3%                            |                                 |                                 |                                 |
| Maximum AC short circuit current from network                              | 80 kA (1 s RMS)                 |                                 |                                 |                                 |
| Distribution network type <sup>7)</sup>                                    | TN and IT                       |                                 |                                 |                                 |
| <b>Efficiency</b>                                                          |                                 |                                 |                                 |                                 |
| Maximum <sup>8)</sup>                                                      | 98.8%                           |                                 |                                 |                                 |
| Euro-eta <sup>8)</sup>                                                     | 98.6%                           |                                 |                                 |                                 |
| CEC efficiency <sup>9)</sup>                                               | 98.5%                           |                                 |                                 |                                 |
| <b>Power consumption</b>                                                   |                                 |                                 |                                 |                                 |
| Own consumption in normal operation                                        | 5000 W                          |                                 |                                 |                                 |
| Maximum standby operation consumption                                      | 460 W                           |                                 |                                 |                                 |
| Auxiliary voltage type                                                     | external <sup>10)</sup>         |                                 |                                 |                                 |

<sup>1)</sup> DC/AC ratio close to 2.0 might shorten maintenance intervals

<sup>2)</sup> Throughout the temperature range

<sup>3)</sup> Standard 24 DC inputs with negative grounding, fuses on positive pole only

<sup>4)</sup> +/- 10%, consult FIMER for detailed information

<sup>5)</sup> +/- 10 Hz

<sup>6)</sup> At nominal power

<sup>7)</sup> Inverter side must be IT type

<sup>8)</sup> Without auxiliary power consumption at min U<sub>dc</sub>

<sup>9)</sup> Rounded according to CEC rules

<sup>10)</sup> Internal available as an option

| Technical data and types                          |                                                                                                              |                   |                   |                   |
|---------------------------------------------------|--------------------------------------------------------------------------------------------------------------|-------------------|-------------------|-------------------|
| Product                                           | PVS980-58 4.3 MVA                                                                                            | PVS980-58 4.6 MVA | PVS980-58 4.8 MVA | PVS980-58 5.0 MVA |
| Type designation, PVS980-58                       | -4348kVA-I                                                                                                   | -4565kVA-J        | -4782kVA-K        | -5000kVA-L        |
| <b>Dimensions and weight</b>                      |                                                                                                              |                   |                   |                   |
| Width/Height/Depth, mm (W/H/D)                    | 5600/2200/1600                                                                                               |                   |                   |                   |
| Weight appr.                                      | Max. 6000 kg                                                                                                 |                   |                   |                   |
| <b>Environmental limits</b>                       |                                                                                                              |                   |                   |                   |
| Degree of protection                              | IP55 /Type 3R, sand test certified.                                                                          |                   |                   |                   |
| Ambient temp. range <sup>11)</sup>                | -20 ... +50 °C                                                                                               |                   |                   |                   |
| Maximum ambient temperature <sup>12)</sup>        | +60 °C                                                                                                       |                   |                   |                   |
| Relative humidity                                 | 4 ... 100%                                                                                                   |                   |                   |                   |
| Maximum altitude (above sea level) <sup>13)</sup> | 4000m <sup>14)</sup>                                                                                         |                   |                   |                   |
| Maximum noise level                               | 84 dBA <sup>15)</sup>                                                                                        |                   |                   |                   |
| <b>Protection</b>                                 |                                                                                                              |                   |                   |                   |
| Ground fault monitoring                           | Yes                                                                                                          |                   |                   |                   |
| Grid monitoring                                   | Yes                                                                                                          |                   |                   |                   |
| Anti-islanding                                    | Yes                                                                                                          |                   |                   |                   |
| DC reverse polarity                               | Yes                                                                                                          |                   |                   |                   |
| AC and DC short circuit and over current          | Yes                                                                                                          |                   |                   |                   |
| AC and DC over voltage and temperature            | Yes                                                                                                          |                   |                   |                   |
| <b>User interface and communications</b>          |                                                                                                              |                   |                   |                   |
| Local user interface                              | Local control panel                                                                                          |                   |                   |                   |
| Analog inputs/outputs                             | 2/1 as standard, extendable as engineered option                                                             |                   |                   |                   |
| Digital inputs/relay outputs                      | 7/1 as standard, extendable as engineered option                                                             |                   |                   |                   |
| Fieldbus connectivity                             | Modbus, Profinet, Ethernet IP <sup>16)</sup>                                                                 |                   |                   |                   |
| <b>Product compliance</b>                         |                                                                                                              |                   |                   |                   |
| Safety and EMC                                    | CE Declaration of Conformity, IEC62109-1, IEC62109-2, UL62109, UL1741, CSA C22.2 No. 107.1-16, RCM, IEC62920 |                   |                   |                   |
| Characteristics                                   | IEC60068-2-1, -2, -14, -30, IEC61683, EN50530, IEC61727, IEC62116, IEC62910, ANSI/UL1998                     |                   |                   |                   |
| Grid codes                                        | IEEE1547-2003, VDE-AR-N 4110, UL1741SA, PO12.2 / NTS, G99, CEA (India), DEWA, Chile                          |                   |                   |                   |
| Grid support and grid functions                   | Reactive power compensation, Power reduction, LVRT, HVRT, FqRT                                               |                   |                   |                   |

<sup>11)</sup> -40 °C as option

<sup>12)</sup> Power limiting after 50 °C

<sup>13)</sup> Possible power limiting above 1000 m, depending on temperature

<sup>14)</sup> Standard device up to 2000m, up to 4000m as an option

<sup>15)</sup> At partial power typically < 75 dBA

<sup>16)</sup> More communication options as engineered option

# FIMER compact skid IEC version (1500 Vdc) PVS980-CS up to 5000 kVA

The FIMER compact skid is a plug and play solution designed for large-scale solar power generation using PVS980-58 high-power central inverters. It houses all the electrical equipment that is needed to rapidly connect a photovoltaic (PV) power plant to a medium voltage (MV) electricity grid.

## Turnkey-solution for PV power plants

The FIMER compact skid design capitalizes on FIMER's long experience in developing and manufacturing solutions for utilities and major end users worldwide in conventional power transmission installations.

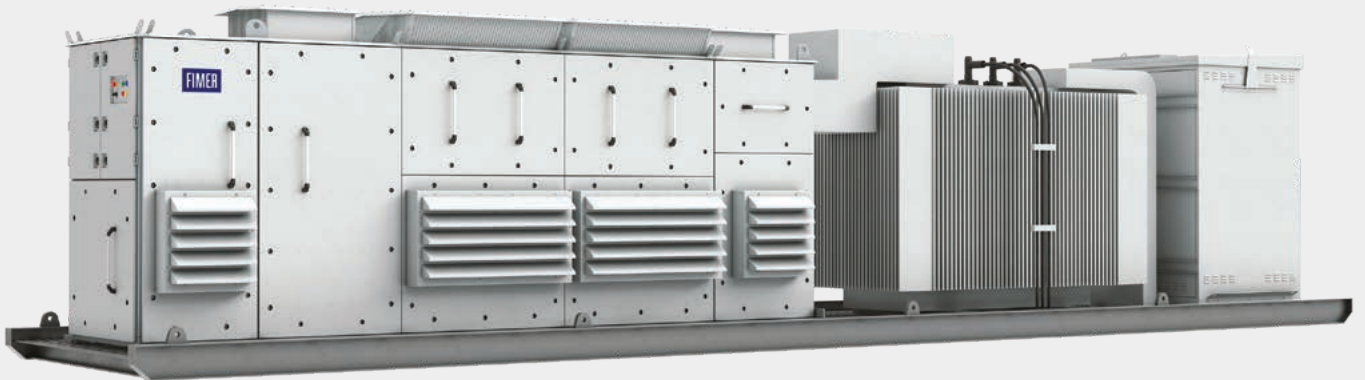
A skid houses one 4348 to 5000kVA FIMER PVS980-58 central inverter, an optimized MV oil immersed transformer, MV switchgear and all needed auxiliary services. The FIMER compact skid is used to connect a PV power plant to a MV electricity grid easily and rapidly. To meet the PV power plant's demanded capacity, several FIMER compact skids can be used.

## Compact design eases transportation

The compact skid solution has dimensions suitable for transportation inside closed 40 feet High Cube (HC) shipping container. The total package weighs less than 24 tons. The standardized shipping dimensions ensures cost-effective and safe transportability to the site, even overseas. Inverter's optimized air circulation and filtering system, together with hermetically sealed oil immersed transformer enable installations in various ambient conditions, from harsh desert temperatures to cold and humid environments. The FIMER compact skid is designed for at least 25 years of operation.

## Highlights

- Proven technology and reliable components
- Compact and robust design
- Outstanding endurance for outdoor use
- High DC input voltage up to 1500 VDC
- High total efficiency
- Extensive DC and AC side protection
- Self-contained cooling system for inverters
- Modular and serviceable system
- Embedded auxiliary power distribution system
- Extendable manufacturing footprint with fast deliveries
- Global life cycle services and support
- Transportable inside closed 40 feet HC shipping container
- Arc-proof design



**Solar inverters**

The FIMER PVS980-58 inverter has been developed on the basis of decades of experience in the industry and proven technology platform. Unrivalled expertise from the world's market and technology leader in frequency converters is the hallmark of this solar inverter series. The PVS980-58 inverter is one of the most efficient and cost-effective ways of converting the direct current (DC) generated by solar modules into high quality and CO<sub>2</sub>-free alternating current (AC) that can be fed into the power distribution network. One FIMER central inverter is used in the FIMER compact skid. The inverter provides high conversion efficiency with low auxiliary power consumption, as well as very low maintenance need.

**Transformer**

The FIMER compact skid includes an oil immersed transformer. The transformer is designed to meet the reliability, durability and

efficiency required in PV applications. It is specifically designed and optimized for the PVS980-58 inverter to provide the best performance throughout the lifetime of the plant.

Different power transformers are available to meet customer requirements. All transformers are manufactured in accordance with the most demanding industry and international standards.

**Switchgear**

The FIMER compact skid is equipped, as standard, with the widely proven SF<sub>6</sub>-insulated switchgear.

A sealed steel tank with constant atmospheric conditions ensures a high level of reliability as well as personnel safety. The virtually maintenance-free system comes in a compact and flexible design that allows for a versatile switchgear configuration with arc-proof capability.

## Technical data and type

| Type code                                              | 4.3MVA                                                                         | 4.6MVA      | 4.8MVA      | 5.0MVA      |
|--------------------------------------------------------|--------------------------------------------------------------------------------|-------------|-------------|-------------|
| <b>Maximum rating in kVA</b>                           | <b>4348</b>                                                                    | <b>4565</b> | <b>4782</b> | <b>5000</b> |
| <b>Inverter</b>                                        |                                                                                |             |             |             |
| Inverter                                               | PVS980-58, 4.3-5MVA                                                            |             |             |             |
| Maximum operating DC input voltage                     | 1500 V                                                                         |             |             |             |
| Number of inverters                                    | 1                                                                              | 1           | 1           | 1           |
| Number of independent MPPT                             | 1                                                                              | 1           | 1           | 1           |
| MPPT range @ 25° C in V                                | 850-1350                                                                       | 893-1350    | 935-1350    | 978-1350    |
| MPPT range @ 35° C in V                                | 850-1250                                                                       | 893-1250    | 935-1250    | 978-1250    |
| MPPT range @ 50° C in V                                | 850-1100                                                                       | 893-1100    | 935-1100    | 978-1100    |
| AC output voltage                                      | 600 V                                                                          | 630 V       | 660 V       | 690 V       |
| <b>MV transformer</b>                                  |                                                                                |             |             |             |
| Transformer type                                       | Oil immersed (ONAN)                                                            |             |             |             |
| AC Power @ 25° C in kVA                                | 4343                                                                           | 4565        | 4782        | 5000        |
| AC Power @ 35° C in kVA                                | 4229                                                                           | 4441        | 4652        | 4864        |
| AC Power @ 50° C in kVA                                | 3845                                                                           | 4037        | 4229        | 4421        |
| Number of secondary windings                           | 1                                                                              | 1           | 1           | 1           |
| Low voltage level                                      | 600 V                                                                          | 630 V       | 660 V       | 690 V       |
| Medium voltage level range                             | ≤ 36 kV                                                                        |             |             |             |
| Rated frequency                                        | 50Hz or 60 Hz                                                                  |             |             |             |
| Oil type                                               | Mineral (vegetable optional)                                                   |             |             |             |
| Tap changer                                            | ± 2 x 2.5%                                                                     |             |             |             |
| Winding material (primary / secondary)                 | Al / Al                                                                        |             |             |             |
| Eco efficiency optional                                | Yes                                                                            |             |             |             |
| <b>MV switchgear</b>                                   |                                                                                |             |             |             |
| Switchgear type                                        | SF6-insulated                                                                  |             |             |             |
| Rated current                                          | 630 A                                                                          |             |             |             |
| Configuration                                          | Single (CV) or double feeder (CCV)                                             |             |             |             |
| Protection (up to 24 kV / up to 36 kV)                 | Circuit breaker (16 kA or 20 kA / 20 kA or 25 kA)                              |             |             |             |
| Protection relay type                                  | REJ603 (others on request)                                                     |             |             |             |
| Motorized optional                                     | Yes                                                                            |             |             |             |
| <b>Auxiliary supply</b>                                |                                                                                |             |             |             |
| Auxiliary transformer power                            | 10 kVA (higher on request)                                                     |             |             |             |
| Auxiliary transformer primary voltage level            | 600 V                                                                          | 630 V       | 660 V       | 690 V       |
| Auxiliary transformer secondary voltage level          | 400-230 V                                                                      |             |             |             |
| Low voltage distribution panel for auxiliary functions | Yes                                                                            |             |             |             |
| <b>Mechanical characteristics</b>                      |                                                                                |             |             |             |
| Transport dimensions (length x width x height) in mm   | 11850 x 2150 x 2570 (40ft HC container dimensions)                             |             |             |             |
| Weight approx. in ton                                  | 24                                                                             |             |             |             |
| <b>Environmental</b>                                   |                                                                                |             |             |             |
| Operating temperature range                            | -20° C ... +50° C                                                              |             |             |             |
| Operating altitude range                               | ≤ 2000 m                                                                       |             |             |             |
| Relative humidity (non-condensing)                     | ≤ 95%                                                                          |             |             |             |
| Environmental protection rating                        | IP 54 (IP 55 for inverter)                                                     |             |             |             |
| Painting corrosion protection                          | C4                                                                             |             |             |             |
| <b>Product compliance</b>                              |                                                                                |             |             |             |
| Conformity                                             | IEC 60364, IEC 61936-1, IEC 60502-1                                            |             |             |             |
| Grid support                                           | Reactive power compensation (also at night), power reduction, LVRT, HVRT, FqRT |             |             |             |

# FIMER compact skid for US market (1500 Vdc) **PVS980-CS-US**

---

## up to 5000 kVA

The FIMER compact skid is a plug-and-play solution designed for large-scale solar power generation using PVS980-58 high-power central inverters. It houses all the electrical equipment that is needed to rapidly connect a photovoltaic (PV) power plant to a medium voltage (MV) electricity grid.

### **Turnkey-solution for PV power plants**

The FIMER compact skid design capitalizes on FIMER's long experience in developing and manufacturing solutions for utilities and major end users worldwide in conventional power transmission installations.

A skid houses one 4348 to 5000kVA FIMER PVS980-58 central inverter, an optimized MV oil immersed transformer and all needed auxiliary services. The FIMER compact skid is used to connect a PV power plant to a MV electricity grid easily and rapidly. To meet the PV power plant's demanded capacity, several FIMER compact skids can be used.

### **Compact design eases transportation**

The compact skid solution supports fast on-site installation with easy transportation to project sites. Transport of the skid can be done with a standard truck and can be set in place with a standard crane for a simple installation. Inverter's optimized air circulation and filtering system, together with hermetically sealed oil immersed transformer enable installations in various ambient conditions, from harsh

desert temperatures to cold and humid environments.

This skid mounted solution is pre-assembled on a factory built steel or concrete foundation. With pre-configured layout options a minimal footprint can be achieved.

The FIMER compact skid is designed for at least 25 years of operation.

### **Highlights**

- Proven technology and reliable components
- Compact and robust design
- Outstanding endurance for outdoor use
- High DC input voltage up to 1500 Vdc
- High total efficiency
- Extensive DC and AC side protection
- Self-contained cooling system for inverters
- Modular and serviceable system
- Embedded auxiliary power distribution system
- Extendable manufacturing footprint with fast deliveries
- Global life cycle services and support
- Arc-proof design





## Technical data and type

| Type code                              | 4.3MVA                                                                                               | 4.6MVA   | 4.8MVA   | 5.0MVA   |
|----------------------------------------|------------------------------------------------------------------------------------------------------|----------|----------|----------|
| Maximum rating in kVA                  | 4348                                                                                                 | 4565     | 4782     | 5000     |
| <b>Inverter</b>                        |                                                                                                      |          |          |          |
| Inverter                               | PVS980-58, 4.3-5MVA                                                                                  |          |          |          |
| Maximum operating DC input voltage     | 1500 V                                                                                               |          |          |          |
| Number of protected DC inputs          | 24-36                                                                                                |          |          |          |
| Number of inverters                    | 1                                                                                                    | 1        | 1        | 1        |
| Number of independent MPPT             | 1                                                                                                    | 1        | 1        | 1        |
| MPPT range @ 25° C in V                | 850-1350                                                                                             | 893-1350 | 935-1350 | 978-1350 |
| MPPT range @ 35° C in V                | 850-1250                                                                                             | 893-1250 | 935-1250 | 978-1250 |
| MPPT range @ 50° C in V                | 850-1100                                                                                             | 893-1100 | 935-1100 | 978-1100 |
| AC output voltage                      | 600 V                                                                                                | 630 V    | 660 V    | 690 V    |
| <b>MV transformer</b>                  |                                                                                                      |          |          |          |
| Transformer type                       | 3-phase Pad-Mounted, Oil Filled, UL Listed                                                           |          |          |          |
| AC Power @ 25° C in kVA                | 4348kVA                                                                                              | 4565     | 4782     | 5000     |
| AC Power @ 35° C in kVA                | 4229                                                                                                 | 4441     | 4652     | 4864     |
| AC Power @ 50° C in kVA                | 3845                                                                                                 | 4037     | 4229     | 4421     |
| Number of secondary windings           | 1                                                                                                    | 1        | 1        | 1        |
| Low voltage level                      | 600 V                                                                                                | 630 V    | 660 V    | 690 V    |
| Medium voltage level range             | 12.47kV to 34.5kV                                                                                    |          |          |          |
| LV terminals                           | 6-hole integral spade bushings, side mounted for close coupled connection                            |          |          |          |
| HV terminals                           | 600A dead-break bushings (dead front), loop feed or radial feed                                      |          |          |          |
| Rated frequency                        | 60 Hz                                                                                                |          |          |          |
| Cooling Class <sup>1)</sup>            | ONAN                                                                                                 |          |          |          |
| Fluid <sup>2)</sup>                    | Mineral Oil                                                                                          |          |          |          |
| Tap changer                            | ± 2 x 2.5%                                                                                           |          |          |          |
| Winding material (primary / secondary) | Al / Al                                                                                              |          |          |          |
| Protection <sup>3)</sup>               | Current Limiting Fuse & Weak Link Cartridge (based on HV kV rating)                                  |          |          |          |
| Eco efficiency optional                | Yes                                                                                                  |          |          |          |
| Switches                               | 2-Position 300A LBOR transformer switch                                                              |          |          |          |
| Monitoring <sup>4)</sup>               | Pressure relief valve, liquid level, liquid temperature & pressure vacuum gauges with alarm contacts |          |          |          |
| Fittings                               | External drain valve in padlockable box                                                              |          |          |          |

1) KNAN optional

2) Natural Ester Fluid Optional

3) Molded Vacuum Interrupter (MVI) optional below 34.5kV HV rating

4) Includes liquid temperature gauge and pressure vacuum gauge with 2 sets of alarm contacts

| Technical data and type                 |                                                                                                                                                               |        |        |        |
|-----------------------------------------|---------------------------------------------------------------------------------------------------------------------------------------------------------------|--------|--------|--------|
| Type code                               | 4.3MVA                                                                                                                                                        | 4.6MVA | 4.8MVA | 5.0MVA |
| <b>Auxiliary equipment</b>              |                                                                                                                                                               |        |        |        |
| Power (Standard)                        | 1-phase output, 115-120VAC, 4 kVA power, 50 A disconnect switch for protection                                                                                |        |        |        |
| Power (Optional) <sup>5)</sup>          | 3-phase output, max 60 A, rated disconnect switch, auxiliary step-down transformer, 3-phase output, 208/120V, 10kVA customer auxiliary power output available |        |        |        |
| <b>Environmental</b>                    |                                                                                                                                                               |        |        |        |
| Ambient temperature range <sup>6)</sup> | -20° C ... +50° C                                                                                                                                             |        |        |        |
| Altitude <sup>7)</sup>                  | up to 4000 m                                                                                                                                                  |        |        |        |
| <b>Physical</b>                         |                                                                                                                                                               |        |        |        |
| Base                                    | Open Steel Beam or Concrete                                                                                                                                   |        |        |        |
| Width/Height/Depth (approximate)        | 8'-6" x 9'-8" x 27'-10"                                                                                                                                       |        |        |        |
| Mounting                                | Pad-Mount or Pier Mount                                                                                                                                       |        |        |        |
| Environmental Protection Rating         | NEMA Type 3R                                                                                                                                                  |        |        |        |

5) Voltage based on inverter output, rated power panelboard per customer specifications

6) Extend range -40C optional

7) Derating above 1000m

# FIMER central inverter (1500 Vdc) PVS980-58

## up to 2300 kVA

FIMER high power central inverters raise the performance, cost efficiency and ease of installation to new levels. The inverters are aimed at system integrators and end users who require high-performance solar inverters for large photovoltaic (PV) power plants. PVS980-58 central inverters are now available from 1818 kVA up to 2300 kVA, and are optimized for multi-megawatt power plants.

### World's leading inverter platform

Like other FIMER central inverters, the PVS980-58 has been developed on the basis of decades of experience in the industry and proven technology platform. Unrivalled expertise from the world's market and technology leader in frequency converters is the hallmark of this solar inverter series.

The PVS980-58 inverter is one of the most efficient and cost-effective ways of converting the direct current (DC) generated by solar modules into high quality and CO<sub>2</sub>-free alternating current (AC) that can be fed into the power distribution network.

### PVS980-58 central inverters from FIMER

PVS980-58 central inverters are ideal for large PV power plants. The high DC input voltage, high efficiency, proven components, compact and modular design and a host of life cycle services ensure FIMER PVS980-58 central inverters provide a rapid return on investment.

### Highlights

- Patented, self-contained cooling system with high efficiency
- High total performance
- Outstanding endurance for outdoor use
- Compact, modular product design
- High DC input voltage up to 1500 VDC
- Extensive DC and AC side protection
- Versatile design for large-scale PV plants to minimize system costs
- Complete range of industrial data communication options, including remote monitoring
- Life cycle service and support through FIMER's extensive global service network solar inverters



## Maximum energy revenues

FIMER central inverters have a high total efficiency. Precise, optimized system control and maximum power point tracking (MPPT) combined with the unit's highly efficient power converter design deliver the maximum energy from the PV modules to the power distribution network. For end users, this generates the highest possible revenues from the energy sales.

### **Self-contained, low-maintenance cooling system**

PVS980-58 inverters feature a proven closed loop cooling system used in other industrial applications.

This innovative, low-maintenance cooling solution is designed for demanding applications and harsh environments, cutting maintenance costs and ensuring outstanding endurance.

### **Compact and modular design**

PVS980-58 inverters are designed for fast and easy installation. The industrial design and modular platform provide a wide range of options, such as remote monitoring, fieldbus connection and modular and flexible DC input connections.

The integrated DC cabinet saves space and costs as the solar array junction boxes can be connected directly to the fused busbars in the DC cabinet. PVS980-58 inverters are customized

for the needs of end users and will be available with short delivery times.

### **Versatile design for large-scale PV plants to minimize system costs**

FIMER's PVS980-58 central inverters enable system integrators to design PV power plants that use the optimum combination of inverters with different power ratings. Equipped with extensive electrical and mechanical protection, the inverters are engineered to provide a long and reliable service life of at least 25 years.

### **Advanced grid support features**

The PVS980-58 software includes all the latest grid support and monitoring features, including active power limitation, fault ride through (FRT) with current feed-in and reactive power control.

Active and reactive power output can be controlled by an external control system or automatically by the inverter. All grid support functions are parameterized, allowing easy adjusting for local utility requirements. FIMER central inverters are also able to support grid stability at night by providing reactive power with the DC input disconnected.

## Technical data and types

| Product<br>Type designation                                  | PVS980-58 2.0 MVA<br>-1818kVA-I                                                | PVS980-58 2.1 MVA<br>-1909kVA-J | PVS980-58 2.2 MVA<br>-2000kVA-K | PVS980-58 2.3 MVA<br>-2091kVA-L |
|--------------------------------------------------------------|--------------------------------------------------------------------------------|---------------------------------|---------------------------------|---------------------------------|
| <b>Input (DC)</b>                                            |                                                                                |                                 |                                 |                                 |
| Maximum recommended PV power ( $P_{PV, max}$ ) <sup>1)</sup> | 2909 kWp                                                                       | 3056 kWp                        | 3200 kWp                        | 3346 kWp                        |
| Maximum DC current ( $I_{max(DC)}$ )                         | 2400 A                                                                         | 2400 A                          | 2400 A                          | 2400 A                          |
| DC voltage range, mpp ( $U_{DC, mpp}$ ) at 35 °C             | 850 to 1500 V                                                                  | 893 to 1500 V                   | 935 to 1500 V                   | 978 to 1500 V                   |
| DC voltage range, mpp ( $U_{DC, mpp}$ ) at 50 °C             | 850 to 1100 V                                                                  | 893 to 1100 V                   | 935 to 1100 V                   | 978 to 1100 V                   |
| Maximum DC voltage ( $U_{max(DC)}$ )                         | 1500 V                                                                         | 1500 V                          | 1500 V                          | 1500 V                          |
| Number of MPPT trackers                                      | 1                                                                              | 1                               | 1                               | 1                               |
| Number of protected DC inputs                                | 8 <sup>2)</sup> to 24 (+/-)                                                    | 8 <sup>2)</sup> to 24 (+/-)     | 8 <sup>2)</sup> to 24 (+/-)     | 8 <sup>2)</sup> to 24 (+/-)     |
| <b>Output (AC)</b>                                           |                                                                                |                                 |                                 |                                 |
| Maximum power ( $S_{max(AC)}$ ) <sup>3)</sup>                | 2000 kVA                                                                       | 2100 kVA                        | 2200 kVA                        | 2300 kVA                        |
| Nominal power ( $S_{N(AC)}$ ) <sup>4)</sup>                  | 1818 kVA                                                                       | 1909 kVA                        | 2000 kVA                        | 2091 kVA                        |
| Maximum AC current ( $I_{max(AC)}$ )                         | 1925 A                                                                         | 1925 A                          | 1925 A                          | 1925 A                          |
| Nominal AC current ( $I_{N(AC)}$ )                           | 1750 A                                                                         | 1750 A                          | 1750 A                          | 1750 A                          |
| Nominal output voltage ( $U_{N(AC)}$ ) <sup>5)</sup>         | 600 V                                                                          | 630 V                           | 660 V                           | 690 V                           |
| Output frequency <sup>5)</sup>                               | 50/60 Hz                                                                       | 50/60 Hz                        | 50/60 Hz                        | 50/60 Hz                        |
| Harmonic distortion, current <sup>6)</sup>                   | < 3%                                                                           | < 3%                            | < 3%                            | < 3%                            |
| Distribution network type <sup>7)</sup>                      | TN and IT                                                                      | TN and IT                       | TN and IT                       | TN and IT                       |
| <b>Efficiency</b>                                            |                                                                                |                                 |                                 |                                 |
| Maximum <sup>8)</sup>                                        | 98.8%                                                                          | 98.8%                           | 98.8%                           | 98.8%                           |
| Euro-eta <sup>8)</sup>                                       | 98.6%                                                                          | 98.6%                           | 98.6%                           | 98.6%                           |
| CEC efficiency <sup>9)</sup>                                 | 98.0%                                                                          | 98.5%                           | 98.5%                           | 98.5%                           |
| <b>Power consumption</b>                                     |                                                                                |                                 |                                 |                                 |
| Self consumption in normal operation                         | ≤ 2500 W                                                                       | ≤ 2500 W                        | ≤ 2500 W                        | ≤ 2500 W                        |
| Standby operation consumption                                | 235 W                                                                          | 235 W                           | 235 W                           | 235 W                           |
| Auxiliary voltage source <sup>10)</sup>                      | External, 1-phase                                                              | External, 1-phase               | External, 1-phase               | External, 1-phase               |
| <b>Environmental limits</b>                                  |                                                                                |                                 |                                 |                                 |
| Degree of protection                                         | IP66 <sup>11)</sup> / UL Type 3R                                               |                                 |                                 |                                 |
| Ambient temp. range (nom. ratings) <sup>12)</sup>            | -20 °C to +50 °C                                                               |                                 |                                 |                                 |
| Maximum ambient temperature <sup>13)</sup>                   | +60 °C                                                                         |                                 |                                 |                                 |
| Relative humidity                                            | 5% to 100%                                                                     |                                 |                                 |                                 |
| Maximum altitude (above sea level)                           | 4000 m <sup>14)</sup>                                                          |                                 |                                 |                                 |
| Typical sound pressure level<br>(at 1 m distance)            | < 75 dB (A) <sup>15)</sup>                                                     |                                 |                                 |                                 |
| Maximum sound pressure level<br>(at 1 m distance)            | < 88 dB (A) <sup>15)</sup>                                                     |                                 |                                 |                                 |
| Local user interface                                         | Control panel                                                                  |                                 |                                 |                                 |
| Analog inputs                                                | 2 as standard                                                                  |                                 |                                 |                                 |
| Digital inputs/relay outputs                                 | 7/1 as standard                                                                |                                 |                                 |                                 |
| Fieldbus connectivity                                        | Modbus, Profinet, Ethernet <sup>16)</sup>                                      |                                 |                                 |                                 |
| <b>Product compliance</b>                                    |                                                                                |                                 |                                 |                                 |
| Safety and EMC <sup>16)</sup>                                | CE conformity according to LV and EMC directives                               |                                 |                                 |                                 |
| Certifications and approvals                                 | IEC, UL, CSA, RCM, IEEE, BDEW, CEI, SAGC, FCC and more                         |                                 |                                 |                                 |
| Grid support and grid functions                              | Reactive power compensation <sup>17)</sup> , Power reduction, LVRT, HVRT, FqRT |                                 |                                 |                                 |
| <b>Dimensions and weight</b>                                 |                                                                                |                                 |                                 |                                 |
| Width/Height/Depth, mm (W/H/D)                               | 3180/2443/1522                                                                 | 3180/2443/1522                  | 3180/2443/1522                  | 3180/2443/1522                  |
| Weight appr.                                                 | 3500 kg                                                                        | 3500 kg                         | 3500 kg                         | 3500 kg                         |

<sup>1)</sup> DC/AC ratio over 1.6 might decrease maintenance intervals

<sup>2)</sup> As standard

<sup>3)</sup> At 35 °C

<sup>4)</sup> At 50 °C

<sup>5)</sup> ±10%

<sup>6)</sup> At nominal power

<sup>7)</sup> Inverter side must be IT type

<sup>8)</sup> Without auxiliary power consumption at min  $U_{DC}$

<sup>9)</sup> With auxiliary power included

<sup>10)</sup> Internal as option

<sup>11)</sup> Excluding underpressure testing, IP56 with underpressure

<sup>12)</sup> -40 °C as option

<sup>13)</sup> Power derating after 50 °C

<sup>14)</sup> Power derating above 1000 m

<sup>15)</sup> A - weighted

<sup>16)</sup> More communication options as engineered option

<sup>17)</sup> Also at night

# FIMER bidirectional converter (1500 Vdc) **PVS980-58BC**

---

## up to 2300 kVA

FIMER bidirectional converter PVS980-58BC is aimed at large-scale grid connected energy storage applications. The converters are available from 1454 kVA up to 2300 kVA. PVS980-58BC bidirectional converter is based on the world's leading converter platform used also in FIMER solar inverters ensuring high performance, reliability and availability of global service support.

### **World's leading converter platform**

Like FIMER central inverters, the PVS980-58BC bidirectional converter has been developed on the basis of decades of experience in the industry and proven technology platform. Unrivalled expertise from the world's market and technology leader in frequency converters is the hallmark of the PVS980-58BC series.

### **PVS980-58BC bidirectional converter from FIMER**

FIMER PVS980-58BC bidirectional converters are ideal for multi-megawatt energy storage systems, providing maximum grid stability for power plants with intermittent energy sources. For power plants combining photovoltaics and energy storage, the common platform shared with PVS980-58BC bidirectional converter and PVS980-58BC central inverter brings synergies in both the availability of service and support personnel and the spare part logistics.

### **Highlights**

- Patented, self-contained cooling system suitable for harsh environments
- High total performance
- Outstanding endurance for outdoor use
- Full four quadrant active power and reactive power support
- High DC input voltage up to 1500 VDC for minimizing system cost
- Compact, modular product design
- Life cycle service and support through FIMER's extensive global service network





## Technical data and type

| Product Type designation                                           | PVS980-58BC<br>-1454kVA-E                                                             | PVS980-58BC<br>-1575kVA-F | PVS980-58BC<br>-1696kVA-G | PVS980-58BC<br>-1818kVA-I | PVS980-58BC<br>-1909kVA-J | PVS980-58BC<br>-2000kVA-K | PVS980-58BC<br>-2091kVA-L |
|--------------------------------------------------------------------|---------------------------------------------------------------------------------------|---------------------------|---------------------------|---------------------------|---------------------------|---------------------------|---------------------------|
| <b>Input (DC)</b>                                                  |                                                                                       |                           |                           |                           |                           |                           |                           |
| Full power DC voltage range, ( $U_{DC}$ )<br>a 50 °C <sup>1)</sup> | 680 to 880 V                                                                          | 737 to 950 V              | 794 to 1020 V             | 850 to 1100 V             | 893 to 1100 V             | 935 to 1100 V             | 978 to 1100 V             |
| DC voltage operating range, ( $U_{DC}$ ) <sup>1)</sup>             | 680 to 1500 V                                                                         | 737 to 1500 V             | 794 to 1500 V             | 850 to 1500 V             | 893 to 1500 V             | 935 to 1500 V             | 978 to 1500 V             |
| Maximum DC voltage ( $U_{max(DC)}$ )                               | 1500 V                                                                                | 1500 V                    | 1500 V                    | 1500 V                    | 1500 V                    | 1500 V                    | 1500 V                    |
| Maximum DC current ( $I_{max(DC)}$ ) at<br>35 °C                   | 2400 A                                                                                | 2400 A                    | 2400 A                    | 2400 A                    | 2400 A                    | 2400 A                    | 2400 A                    |
| Maximum DC current ( $I_{max(DC)}$ ) at<br>50 °C                   | 2182 A                                                                                | 2182 A                    | 2182 A                    | 2182 A                    | 2182 A                    | 2182 A                    | 2182 A                    |
| Number of DC inputs                                                | 8 inputs, as option 12 inputs or 16 inputs (+/-) and DC input current measurement     |                           |                           |                           |                           |                           |                           |
| Max DC short circuit withstand                                     | 73 kApeak, 17 MA <sup>2</sup> s, external aR fuses required between converter and BES |                           |                           |                           |                           |                           |                           |
| DC grounding                                                       | Floating only                                                                         |                           |                           |                           |                           |                           |                           |
| DC surge arrester                                                  | Type 2 as standard. High Energy Type 1 as option                                      |                           |                           |                           |                           |                           |                           |
| DC disconnecter                                                    | as option                                                                             |                           |                           |                           |                           |                           |                           |
| <b>Output (AC)</b>                                                 |                                                                                       |                           |                           |                           |                           |                           |                           |
| Output power ( $S_{max(AC)}$ ) at 50 °C                            | 1454 kVA                                                                              | 1575 kVA                  | 1696 kVA                  | 1818 kVA                  | 1909 kVA                  | 2000 kVA                  | 2091 kVA                  |
| Nominal power ( $S_{N(AC)}$ ) at 35 °C                             | 1600 kVA                                                                              | 1733 kVA                  | 1866 kVA                  | 2000 kVA                  | 2100 kVA                  | 2200 kVA                  | 2300 kVA                  |
| Maximum AC current ( $I_{max(AC)}$ ) at 50 °C                      | 1750 A                                                                                | 1750 A                    | 1750 A                    | 1750 A                    | 1750 A                    | 1750 A                    | 1750 A                    |
| Maximum AC current ( $I_{max(AC)}$ ) at 35 °C                      | 1925 A                                                                                | 1925 A                    | 1925 A                    | 1925 A                    | 1925 A                    | 1925 A                    | 1925 A                    |
| Nominal output voltage ( $U_{N(AC)}$ ) <sup>2)</sup>               | 480 V                                                                                 | 520 V                     | 560 V                     | 600 V                     | 630 V                     | 660 V                     | 690 V                     |
| Output frequency                                                   | 50/60 Hz                                                                              | 50/60 Hz                  | 50/60 Hz                  | 50/60 Hz                  | 50/60 Hz                  | 50/60 Hz                  | 50/60 Hz                  |
| Harmonic distortion, current <sup>3)</sup>                         | < 3%                                                                                  | < 3%                      | < 3%                      | < 3%                      | < 3%                      | < 3%                      | < 3%                      |
| Distribution network type                                          | IT                                                                                    | IT                        | IT                        | IT                        | IT                        | IT                        | IT                        |
| Power factor                                                       | Four quadrant                                                                         |                           |                           |                           |                           |                           |                           |
| AC disconnecter / AC breaker                                       | as option                                                                             |                           |                           |                           |                           |                           |                           |
| AC surge arrester                                                  | Type 2 as standard. High Energy Type 1 as option                                      |                           |                           |                           |                           |                           |                           |
| <b>Efficiency</b>                                                  |                                                                                       |                           |                           |                           |                           |                           |                           |
| Maximum <sup>4)</sup>                                              | 98.6%                                                                                 | 98.7%                     | 98.7%                     | 98.8%                     | 98.8%                     | 98.8%                     | 98.8%                     |
| <b>Auxiliary power consumption</b>                                 |                                                                                       |                           |                           |                           |                           |                           |                           |
| Max. own consumption in operation                                  | 2500 W                                                                                | 2500 W                    | 2500 W                    | 2500 W                    | 2500 W                    | 2500 W                    | 2500 W                    |
| Standby operation consumption                                      | 235 W                                                                                 | 235 W                     | 235 W                     | 235 W                     | 235 W                     | 235 W                     | 235 W                     |
| Auxiliary voltage source                                           | External, 1 phase auxiliary power input <sup>5)</sup>                                 |                           |                           |                           |                           |                           |                           |

1) Minimum DC ( $U_{DC,min}$ ) for  $U_{N(AC)}$  and power factor=1. The minimum DC voltage depends on AC voltage and power factor. The AC dependency follows formula  $U_{DC,min} = U_{AC} * \sqrt{2} * 1.002$  with PF=1. Contact FIMER for more information.

2) ±10%

3) At nominal active power

4) Without auxiliary power consumption at min  $U_{DC}$

5) As option internal auxiliary power (internal transformer from inverter output)

## Technical data and type

| Product                                                   | PVS980-58BC                                                                    | PVS980-58BC | PVS980-58BC | PVS980-58BC | PVS980-58BC | PVS980-58BC | PVS980-58BC |
|-----------------------------------------------------------|--------------------------------------------------------------------------------|-------------|-------------|-------------|-------------|-------------|-------------|
| Type designation                                          | -1454kVA-E                                                                     | -1575kVA-F  | -1696kVA-G  | -1818kVA-I  | -1909kVA-J  | -2000kVA-K  | -2091kVA-L  |
| <b>Dimensions and weight</b>                              |                                                                                |             |             |             |             |             |             |
| Width/Height/Depth, mm (W/H/D)                            | 3180/2443/1522                                                                 |             |             |             |             |             |             |
| Weight appr.                                              | 3500 kg                                                                        |             |             |             |             |             |             |
| <b>Environmental limits</b>                               |                                                                                |             |             |             |             |             |             |
| Degree of protection <sup>6)</sup>                        | IP66/UL Type 3R                                                                |             |             |             |             |             |             |
| Ambient temp. range (nom. ratings) <sup>7)</sup>          | -20 °C to +50 °C                                                               |             |             |             |             |             |             |
| Maximum ambient temperature <sup>8)</sup>                 | +60 °C                                                                         |             |             |             |             |             |             |
| Relative humidity                                         | 5% to 100%                                                                     |             |             |             |             |             |             |
| Maximum altitude (above sea level) <sup>9)</sup>          | 4000 m                                                                         |             |             |             |             |             |             |
| Maximum sound pressure level <sup>10)</sup>               | 88 dBA                                                                         |             |             |             |             |             |             |
| <b>Protection</b>                                         |                                                                                |             |             |             |             |             |             |
| Ground fault monitoring                                   | Yes                                                                            |             |             |             |             |             |             |
| Grid monitoring                                           | Yes                                                                            |             |             |             |             |             |             |
| Anti-islanding                                            | Yes                                                                            |             |             |             |             |             |             |
| DC reverse polarity                                       | Yes                                                                            |             |             |             |             |             |             |
| AC/DC short circuit and overcurrent <sup>11)</sup>        | Yes                                                                            |             |             |             |             |             |             |
| AC/DC overvoltage and temperature                         | Yes                                                                            |             |             |             |             |             |             |
| <b>Energy Storage firmware</b>                            |                                                                                |             |             |             |             |             |             |
| PQ setpoints                                              | Yes                                                                            |             |             |             |             |             |             |
| Start and stop sequence for battery energy storage system | Yes                                                                            |             |             |             |             |             |             |
| <b>User interface and communications</b>                  |                                                                                |             |             |             |             |             |             |
| Local user interface                                      | Local control panel                                                            |             |             |             |             |             |             |
| Analog inputs                                             | 2 as standard                                                                  |             |             |             |             |             |             |
| Digital inputs/relay outputs                              | 7/1 as standard                                                                |             |             |             |             |             |             |
| Fieldbus connectivity <sup>12)</sup>                      | Modbus, Profinet, Ethernet                                                     |             |             |             |             |             |             |
| <b>Product compliance <sup>13)</sup></b>                  |                                                                                |             |             |             |             |             |             |
| Safety and EMC                                            | CE according to LV and EMC directives                                          |             |             |             |             |             |             |
| Certifications and approvals                              | IEC, UL, CSA, RCM, IEEE, BDEW, CEI, SAGC, FCC                                  |             |             |             |             |             |             |
| Grid support and grid functions                           | Reactive power compensation, Power reduction, LVRT, HVRT, FqRT, Anti-islanding |             |             |             |             |             |             |

6) IP66 excluding under pressure testing, IP56 with under pressure

7) -40 °C as option

8) Power derating after 50 °C

9) Derating above 1000 m, as option above 2000 m

10) A-weighted Sound pressure level at 1m

At partial power typically &lt; 75 dB

11) DC short circuit protection with external aR fuses

12) More communication options as engineered option

13) Approvals pending, contact FIMER for more information

# Coupled Storage System

## PVS980-58 DC

FIMER's PVS980-58 central inverter provides the most robust and reliable Utility-Scale DC-Coupled Storage System through our partnership with Dynapower.

The PVS980-58 DC-Coupled Storage System combines state-of-the-art PVS980-58 2 and 5MVA central inverters with Dynapower's advanced DPS-500 bi-directional DC/DC converter.



### Key features

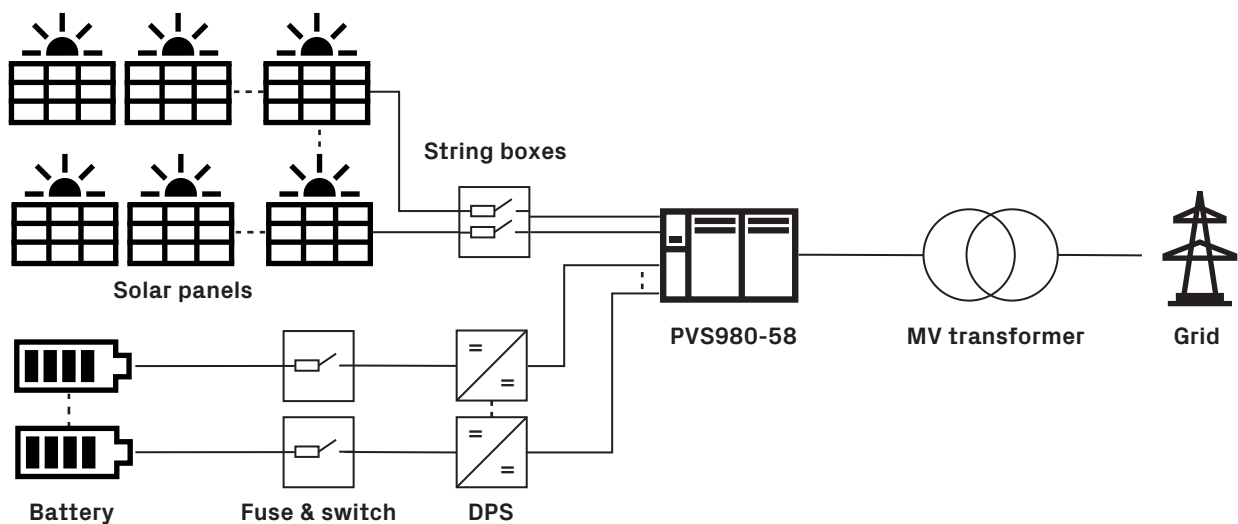
- Utilization of high DC to AC ratio benefit due to high short circuit rating of PVS980 solar inverters
- Retrofitting of existing PVS980 plants with energy storage option
- Modular concept for simple and easy expandability of Energy storage portion afterwards

### Advantages of DC-Coupled Storage

- Solar Peak Energy Re-capture
- Low-Voltage Harvesting
- Demand Charge Management
- Improved round trip efficiency of stored energy
- Storing clipped power to battery
- Optimal utilization of high DC/AC ratios
- Reduced AC interconnection scope

### Best suited applications

- Energy-time shifting
- Capacity firming
- Ramp-rate control



## Specifications

### PVS980-58 4.3 - 5MVA central inverter

| Inverter type                                       | -4348kVA-I                                                                                   | -4565kVA-J       | -4782kVA-K       | -5000kVA-L       |
|-----------------------------------------------------|----------------------------------------------------------------------------------------------|------------------|------------------|------------------|
| Maximum input voltage                               |                                                                                              |                  |                  | 1500 Vdc         |
| Max Power Voltage Range (MPPT) (Ⓜ+25C)              | 850 - 1350 Vdc                                                                               | 893 - 1350 Vdc   | 935 - 1350 Vdc   | 978 - 1350 Vdc   |
| Operating Voltage Range                             | 850 - 1500 Vdc                                                                               | 893 - 1500 Vdc   | 935 - 1500 Vdc   | 978 - 1500 Vdc   |
| Max Operating Input Current                         |                                                                                              |                  |                  | 5300 A           |
| Maximum Operating PV Power                          | 8696 kWdc                                                                                    | 9130 kWdc        | 9564 kWdc        | 10000 kWdc       |
| Nominal Output Voltage                              | 600 Vac                                                                                      | 630 Vac          | 660 Vac          | 690 Vac          |
| Continuous Real/Apparent Power Output (Ⓜ+25C) (max) | 4348 kW/4348 kVA                                                                             | 4565 kW/4565 kVA | 4782 kW/4782 kVA | 5000 kW/5000 kVA |
| Maximum Output Current (Ⓜ+25C)                      |                                                                                              |                  |                  | 4184 A           |
| Maximum Efficiency                                  |                                                                                              |                  |                  | 98.8 %           |
| Certifications *                                    | UL62109, UL1741, CSA C22.2 No. 107.1-16, ANSI/UL1998, IEEE1547-2003, VDE-AR-N 4110, UL1741SA |                  |                  |                  |

\*See flyer and HW manual for complete list of certifications

### PVS980-58 2.0 - 2.3MVA central inverter

| Inverter type                               | -1818kVA-I                                                                                   | -1909kVA-J       | -2000kVA-K       | -2091kVA-L       |
|---------------------------------------------|----------------------------------------------------------------------------------------------|------------------|------------------|------------------|
| Maximum input voltage                       |                                                                                              |                  |                  | 1500 Vdc         |
| Max Power Voltage Range (MPPT) (Ⓜ+25C)      | 850 - 1500 Vdc                                                                               | 893 - 1500 Vdc   | 935 - 1500 Vdc   | 978 - 1500 Vdc   |
| Operating Voltage Range                     | 850 - 1500 Vdc                                                                               | 893 - 1500 Vdc   | 935 - 1500 Vdc   | 978 - 1500 Vdc   |
| Max Operating Input Current                 |                                                                                              |                  |                  | 2400 A           |
| Maximum Operating PV Power                  | 2909 kWdc                                                                                    | 3056 kWdc        | 3200 kWdc        | 3346 kWdc        |
| Nominal Output Voltage                      | 600 Vac                                                                                      | 630 Vac          | 660 Vac          | 690 Vac          |
| Continuous Real/Apparent Power Output (max) | 1818 kW/1818 kVA                                                                             | 1909 kW/1909 kVA | 2000 kW/2000 kVA | 2091 kW/2091 kVA |
| Maximum Output Current (Ⓜ+35C)              |                                                                                              |                  |                  | 1925 A           |
| Maximum Efficiency                          |                                                                                              |                  |                  | 98.8 %           |
| Certifications *                            | UL62109, UL1741, CSA C22.2 No. 107.1-16, ANSI/UL1998, IEEE1547-2003, VDE-AR-N 4110, UL1741SA |                  |                  |                  |

\*See flyer and HW manual for complete list of certifications



### Dynapower DC-DC converter specifications

|                                       | DPS-500                                                                                                              |
|---------------------------------------|----------------------------------------------------------------------------------------------------------------------|
| DC Input Voltage Range (Battery Port) | 100-1500 Vdc                                                                                                         |
| DC Input Voltage Range (PV Port)      | 100-1500 Vdc                                                                                                         |
| Max Continuous Power Rating at 30C    | 600 kWdc                                                                                                             |
| Max Continuous Current Rating         | 500 A                                                                                                                |
| Avg Efficiency                        | 99%                                                                                                                  |
| Operating Temperature Range           | -25 to +50 °C                                                                                                        |
| Certifications                        | UL 1741, UL62109-1, FCC Part 15, class A, IEC 62109-1, IEC 62109-2, IEC/EN61000-6-2, IEC/EN61000-6-4, CISPR11 2015-6 |

### Options

- Integrated and flexible DC input extension
- Heavy duty (Type 1) surge protection
- Internal auxiliary power supply
- Fieldbus and Ethernet connections
- Customized DC Integration hubs / re-combiners
- High Accuracy DC Metering (0.2%)
- DC Fusing

### Related products

- Medium voltage station (transformer and switchgear) as outdoor solution
- String monitoring junction boxes with and without monitoring
- Remote monitoring solutions

### Support and service

FIMER supports its customers with a global service network and provides a complete range of life cycle services from installation and commissioning to preventative maintenance, spare parts, repairs and recycling.

# FIMER compact skid IEC version (1500 Vdc) PVS980-CS up to 4600 kVA

The FIMER compact skid is a compact plug and play solution designed for large-scale solar power generation using PVS980-58 high-power central inverters. The station houses all the electrical equipment that is needed to rapidly connect a photovoltaic (PV) power plant to a medium voltage (MV) electricity grid.

## **Turnkey-solution for PV power plants**

The FIMER compact skid design capitalizes on FIMER's long experience in developing and manufacturing solutions for utilities and major end users worldwide in conventional power transmission installations.

A skid houses one or two outdoor 1818 to 2091 kVA FIMER PVS980-58 central inverters, an optimized MV oil immersed transformer, MV switchgear and all needed auxiliary services. The FIMER compact skid is used to connect a PV power plant to a MV electricity grid easily and rapidly. To meet the PV power plant's demanded capacity, several FIMER compact skids can be used.

## **Compact design eases transportation**

The compact skid solution has dimensions suitable for transportation inside closed 40 feet High Cube shipping container. The total package weighs less than 24 tons. The standardized shipping dimensions ensures cost-effective and safe transportability to the site, even overseas. Inverter's optimized air circulation and filtering system, together with hermetically sealed oil immersed transformer enable installations in various ambient conditions, from harsh desert temperatures to cold and humid environments. The FIMER compact skid is designed for at least 25 years of operation.

## **Highlights**

- Proven technology and reliable components
- Compact and robust design
- Outstanding endurance for outdoor use
- High DC input voltage up to 1500 V<sub>dc</sub>
- High total efficiency
- Extensive DC and AC side protection
- Self-contained cooling system for inverters
- Modular and serviceable system
- Embedded auxiliary power distribution system
- Extendable manufacturing footprint with fast deliveries
- Global life cycle services and support
- Transportable inside closed 40 feet HC shipping container
- Arc-proof design



## Technical data and type

| Type code                              | 2.0MVA                                            | 2.1MVA   | 2.2MVA   | 2.3MVA   | 4.0MVA   | 4.2MVA   | 4.4MVA   | 4.6MVA   |
|----------------------------------------|---------------------------------------------------|----------|----------|----------|----------|----------|----------|----------|
| Maximum rating in kVA                  | 2000                                              | 2100     | 2200     | 2300     | 4000     | 4200     | 4400     | 4600     |
| <b>Inverter</b>                        |                                                   |          |          |          |          |          |          |          |
| Inverter                               | PVS980-58, 2.0 - 2.3MVA                           |          |          |          |          |          |          |          |
| Maximum operating DC input voltage     | 1500 V                                            |          |          |          |          |          |          |          |
| Number of inverters                    | 1                                                 | 1        | 1        | 1        | 2        | 2        | 2        | 2        |
| Number of independent MPPT             | 1                                                 | 1        | 1        | 1        | 2        | 2        | 2        | 2        |
| MPPT range @ 35° C in V                | 850-1500                                          | 893-1500 | 935-1500 | 978-1500 | 850-1500 | 893-1500 | 935-1500 | 978-1500 |
| MPPT range @ 50° C in V                | 850-1100                                          | 893-1100 | 935-1100 | 978-1100 | 850-1100 | 893-1100 | 935-1100 | 978-1100 |
| AC output voltage                      | 600 V                                             | 630 V    | 660 V    | 690 V    | 600 V    | 630 V    | 660 V    | 690 V    |
| <b>MV transformer</b>                  |                                                   |          |          |          |          |          |          |          |
| Transformer type                       | Oil immersed (ONAN)                               |          |          |          |          |          |          |          |
| AC Power @ 35° C in kVA                | 2000                                              | 2100     | 2200     | 2300     | 4000     | 4200     | 4400     | 4600     |
| AC Power @ 50° C in kVA                | 1818                                              | 1909     | 2000     | 2091     | 3636     | 3818     | 4000     | 4182     |
| Number of secondary windings           | 1                                                 | 1        | 1        | 1        | 2        | 2        | 2        | 2        |
| Low voltage level                      | 600 V                                             | 630 V    | 660 V    | 690 V    | 600 V    | 630 V    | 660 V    | 690 V    |
| Medium voltage level range             | ≤ 36 kV                                           |          |          |          |          |          |          |          |
| Rated frequency                        | 50Hz or 60 Hz                                     |          |          |          |          |          |          |          |
| Oil type                               | Mineral (vegetable optional)                      |          |          |          |          |          |          |          |
| Tap changer                            | ± 2 x 2.5%                                        |          |          |          |          |          |          |          |
| Winding material (primary / secondary) | Al / Al                                           |          |          |          |          |          |          |          |
| Eco efficiency optional                | Yes                                               |          |          |          |          |          |          |          |
| <b>MV switchgear</b>                   |                                                   |          |          |          |          |          |          |          |
| Switchgear type                        | SF6-insulated                                     |          |          |          |          |          |          |          |
| Rated current                          | 630 A                                             |          |          |          |          |          |          |          |
| Configuration                          | Single (CV) or double feeder (CCV)                |          |          |          |          |          |          |          |
| Protection (up to 24 kV / up to 36 kV) | Circuit breaker (16 kA or 20 kA / 20 kA or 25 kA) |          |          |          |          |          |          |          |
| Protection relay type                  | REJ603 (others on request)                        |          |          |          |          |          |          |          |
| Motorized optional                     | Yes                                               |          |          |          |          |          |          |          |



## Technical data and type

| Type code                                              | 2.0MVA                                                                         | 2.1MVA | 2.2MVA | 2.3MVA | 4.0MVA | 4.2MVA | 4.4MVA | 4.6MVA |
|--------------------------------------------------------|--------------------------------------------------------------------------------|--------|--------|--------|--------|--------|--------|--------|
| <b>Auxiliary supply</b>                                |                                                                                |        |        |        |        |        |        |        |
| Auxiliary transformer power                            | 10 kVA (20kVA, 30kVA optional)                                                 |        |        |        |        |        |        |        |
| Auxiliary transformer primary voltage level            | 600 V                                                                          | 630 V  | 660 V  | 690 V  | 600 V  | 630 V  | 660 V  | 690 V  |
| Auxiliary transformer secondary voltage level          | 400-230 V                                                                      |        |        |        |        |        |        |        |
| Low voltage distribution panel for auxiliary functions | Yes                                                                            |        |        |        |        |        |        |        |
| <b>Mechanical characteristics</b>                      |                                                                                |        |        |        |        |        |        |        |
| Dimensions (length x width x height) in mm             | 11850 x 2150 x 2570 (40ft HC container dimensions)                             |        |        |        |        |        |        |        |
| Weight approx. in ton                                  | 17                                                                             | 17     | 17     | 17     | 24     | 24     | 24     | 24     |
| <b>Environmental</b>                                   |                                                                                |        |        |        |        |        |        |        |
| Operating temperature range                            | -20° C ... +50° C                                                              |        |        |        |        |        |        |        |
| Operating altitude range                               | ≤ 2000 m                                                                       |        |        |        |        |        |        |        |
| Relative humidity (non-condensing)                     | ≤ 95%                                                                          |        |        |        |        |        |        |        |
| Environmental protection rating                        | IP 54 (IP 66 for inverter)                                                     |        |        |        |        |        |        |        |
| Painting corrosion protection                          | C4 (C5M optional)                                                              |        |        |        |        |        |        |        |
| <b>Product compliance</b>                              |                                                                                |        |        |        |        |        |        |        |
| Conformity                                             | IEC 60364, IEC 61936-1, IEC 60502-1                                            |        |        |        |        |        |        |        |
| Grid support                                           | Reactive power compensation (also at night), power reduction, LVRT, HVRT, FqRT |        |        |        |        |        |        |        |

# FIMER compact skid for US market (1500 Vdc) PVS980-CS-US

---

## up to 4400 kVA

The FIMER compact skid is a plug and play solution designed for large-scale solar power generation using PVS980-58 high-power central inverters. It houses all the electrical equipment that is needed to rapidly connect a photovoltaic (PV) power plant to a medium voltage (MV) electricity grid.

### Turnkey-solution for PV power plants

The FIMER compact skid design capitalizes on FIMER's long experience in developing and manufacturing solutions for utilities and major end users worldwide in conventional power transmissions installations. It is made to meet the safety and electrical installation standards for USA markets.

The design is optimized to provide cost-effective transportation as well as fast and easy installation on site.

The FIMER compact skid is used to connect a PV power plant to a MV electricity grid easily and rapidly. To meet the PV power plant's demanded capacity, several FIMER compact skids can be used.

All the components within this medium voltage skid come from FIMER's product portfolio to meet the performance and quality standards required for solar applications. The skid is a cost-effective solution with easy in-lands transportability package for PV power plants.

The FIMER medium voltage skid mounted design capitalizes on FIMER's long experience in developing and manufacturing medium voltage components for utility-scale solutions for major end-users worldwide in conventional power transmission installations. The solution contains an optimized transformer, optional DC disconnection cabinet and signaling interfaces for the PVS980 inverter. PVS980 central inverter together with the skid mounted solution ensures easy and rapid connection of the inverters to a plant's medium voltage grid and its communication network

### Compact and robust design for harsh environments

This skid mounted solution is pre- assembled on a factory built steel or concrete foundation.

The design enables operation in harsh temperature and humidity environments and is designed for at least 25 years of operation. The FIMER medium voltage skid mounted solution supports fast on-site installation and it is easy to transport inlands. Transport of the skid can be done with a standard truck and lifted to site as one transport unit, which simplifies the installation. Together with pre-configured layout options a minimal footprint and optimum cabling can be achieved.

### Highlights

- Reliability – proven components from one supplier
- Transportability – compact and robust design
- Plug-and-play – integrated signaling interfaces
- Increased uptime – modular and serviceable system
- Bankable solution – global life cycle services and support



## Technical data and type

| Compact Skid Type                        | PVS980-CS-2000kVA-US-K-XX                                                                  | PVS980-CS-4000kVA-US-K-XX              |
|------------------------------------------|--------------------------------------------------------------------------------------------|----------------------------------------|
| Inverter Type <sup>1)</sup>              | PVS980-58-2000kVA-K                                                                        | 2 x PVS980-58-2000kVA-K                |
| <b>Input (DC)</b>                        |                                                                                            |                                        |
| Maximum DC Voltage                       |                                                                                            | 1500 V                                 |
| Maximum Combined Input Power             | 3200 kWp                                                                                   | 6400 kWp                               |
| Number of Protected DC inputs            | 24                                                                                         | 48                                     |
| <b>Output (AC)</b>                       |                                                                                            |                                        |
| Inverter Rated Power (at 50°C/35°C)      | 2000 kVA / 2200 kVA                                                                        | 4000 kVA / 4400 kVA                    |
| Inverter Rated AC Current (at 50°C/35°C) | 1750 A / 1925 A                                                                            | 1750 A / 1925 A per inverter           |
| Inverter Rated Output Voltage            | 660 V                                                                                      | 2 x 660 V                              |
| <b>Transformer</b>                       |                                                                                            |                                        |
| Transformer Type <sup>4)</sup>           | 3-Phase Pad-Mounted, Oil Filled, UL Listed                                                 |                                        |
| Power Rating                             | 2200 kVA                                                                                   | 4400 kVA                               |
| Winding Configuration                    | 2-winding                                                                                  | 3-winding                              |
| Cooling Class <sup>2)</sup>              | ONAN                                                                                       |                                        |
| Fluid <sup>3)</sup>                      | Mineral Oil                                                                                |                                        |
| Frequency                                | 60 Hz                                                                                      |                                        |
| Low Voltage                              | 660 V                                                                                      | 2 x 660 V                              |
| High Voltage                             | 12.47 kV to 34.5 kV                                                                        |                                        |
| LV terminals <sup>4)</sup>               | 6-hole integral spade bushings                                                             | 6-hole integral spade bushings x 2     |
| HV terminals                             | 600 A dead-break bushings (dead front) x 6                                                 |                                        |
| Fuses                                    | Bay-O-Net with Back-Up Current Limiting                                                    | Varies based on high voltage kV rating |
| Switches                                 | 2-position 300A LBOR transformer switch                                                    |                                        |
| Monitoring <sup>5)</sup>                 | Pressure relief valve, liquid level-, temperature- and pressure gauges with alarm contacts |                                        |
| Fittings                                 | 1" drain valve and sampler located in LV compartment, external drain valve padlockable box |                                        |
| <b>Auxiliary Equipment</b>               |                                                                                            |                                        |
| Power (Standard)                         | 1-phase output, 115-120VAC, 2 kVA power, 20 A disconnect switch for protection             |                                        |
| Power (Optional) <sup>6)</sup>           | 3-phase output, 660VAC, max 60 A, rated disconnect switch, auxiliary step-down transformer |                                        |
| <b>Environmental</b>                     |                                                                                            |                                        |
| Ambient temperature range <sup>7)</sup>  | -20°C to +50°C                                                                             |                                        |
| Altitude <sup>8)</sup>                   | up to 4000 m                                                                               |                                        |

## Technical data and type

|                                    |                                                                                     |                                    |
|------------------------------------|-------------------------------------------------------------------------------------|------------------------------------|
| <b>Compact Skid Type</b>           | <b>PVS980-CS-2000kVA-US-K-XX</b>                                                    | <b>PVS980-CS-4000kVA-US-K-XX</b>   |
| <b>Inverter Type <sup>1)</sup></b> | <b>PVS980-58-2000kVA-K</b>                                                          | <b>2 x PVS980-58-2000kVA-K</b>     |
| <b>Physical</b>                    |                                                                                     |                                    |
| Base                               | Concrete or Steel                                                                   |                                    |
| Width/Height/Depth (approximate)   | 9'-0" x 8'-10" x 20'-7" (Standard)                                                  | 9'-6" x 8'-10" x 34'-1" (Standard) |
| Mounting                           | Pad-Mount or Pier Mount                                                             |                                    |
| Environmental Protection Rating    | NEMA Type 3R (Inverter) & NEMA Type 3R (All other equipment)                        |                                    |
| <b>Options</b>                     |                                                                                     |                                    |
| DC Disconnect                      | 1500VDC, 8-24 inputs, 150 A-400 A switches, Non-Load Break or Load Break, UL Listed |                                    |
| Oil Containment                    | Vault or Built-in Pan                                                               |                                    |

1) See inverter data sheet for inverter type options  
 2) KNAN optional  
 3) Natural Ester Fluid optional  
 4) Sidewall mounted

5) Includes liquid temperature gauge with 2 sets of alarm contacts  
 6) Rated power panelboard per customer specifications  
 7) Extend range -40°C optional  
 8) Derating above 1000 m

# FIMER medium voltage pad (1000 and 1500 Vdc) PVS980-MVP

---

## up to 10000 kVA

The FIMER medium voltage pad mounted solution is a cost efficient and robust solution designed for large-scale solar power generation and to be compatible with the PVS980-58 outdoor inverters. It combines the medium voltage transformer and the switchgear equipment needed to connect the inverters to the medium voltage network of the photovoltaic plant.

All the components within this medium voltage pad meet the performance and quality standards required for solar applications.

### **Cost efficient solution for PV power plants**

The FIMER medium voltage pad mounted design capitalizes on FIMER's long experience in developing and manufacturing components for utility scale solutions for major end-users worldwide in conventional power transmission installations. The solution contains an optimized transformer, MV switchgear and signaling interfaces for the PVS980-58 inverter. PVS980-58 inverter together with the PVS980 medium voltage pad mounted solution ensure easy and rapid connection of the inverters to a plant's medium voltage grid and its communication network.

### **Compact and robust design for harsh environments**

This pad mounted solution is to be assembled on an onsite built concrete foundation. The design enables operation in harsh temperature and humidity environments and is designed for at least 25 years of operation.

The FIMER medium voltage pad mounted solution supports fast on-site installation and it is easy to transport. Lifting of components can be done with a standard truck crane, which simplifies the installation. The pre-configured layout options allow for a minimal footprint and optimum cabling.

### **Highlights**

- Reliability – proven components
- Transportability – compact and robust design
- Plug-and-play – integrated signaling interfaces
- Increased uptime – modular and serviceable system
- Bankable solution – global life cycle services and support



### Solution

The solution is the result of decades of experience in manufacturing and delivering compact solutions for demanding customer projects all over the world. The solution is made to meet the safety and electrical installation standards of a wide range of markets. The components' compatibility ensures highest standards of quality, performance and durability.

The transformer and switchgear are delivered separate as outdoor versions. The design is optimized to provide easy transportation as well as fast and easy installation on site. The pre-designed pad type concrete foundation layouts for the outdoor type transformer and switchgear optimize the footprint needed and also minimize the cost and on-site works needed. The foundation serves also as a leakage reservoir for the transformer oil.

### Transformer

The FIMER medium voltage pad mounted solution is available with an ONAN type oil transformer. The transformer is designed and optimized for PVS980-58 central inverters and for photovoltaic plant load profile to provide the best

performance throughout the lifetime of the plant.

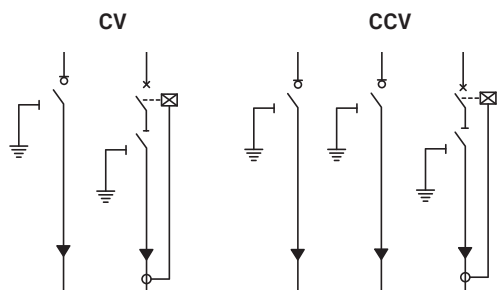
The transformer is also designed to meet the reliability, durability, and efficiency required in PV applications.

Transformers are available in standard sizes that are based on optimized power ratings to meet different climatic conditions and inverter station sizes. The transformers as well as the general design provide excellent mechanical and short-circuit characteristics. Transformers are manufactured in accordance with the most demanding industry and international standards.

### Switchgear cabinet

The FIMER medium voltage pad mounted solution is equipped as standard with widely proven SF<sub>6</sub>-insulated switchgear. A sealed steel tank with constant atmospheric conditions ensures a high level of reliability as well as personnel safety. The virtually maintenance-free system comes in a compact and flexible design that has a wide range of signaling and protection options. The switchgear comes installed in an IP54 outdoor enclosure that is suitable for harsh environments. The outdoor housing provides easy access for switch maneuvers and increased serviceability. For humid conditions the switchgear can be equipped with hygostat and heater for removal of condensation.

### MV switchgear standard configurations for FIMER medium voltage pad mounted solution



### Accessories

- Surge protection for medium voltage side
- Hygostat and heater for medium voltage switchgear
- Transformer LV side terminal box

### Options

- Output voltage from 6 kV up to 36 kV
- Different MV switchgear configurations
- Additional transformer and switchgear signaling options
- LV cable set between inverters and transformer
- MV cable set between transformer and medium voltage switchgear
- Warranty extensions
- Service contracts

### Support and service

FIMER supports its customers with a dedicated global service network and provides a complete range of life cycle services from installation and commissioning to preventative maintenance, spare parts, repairs and recycling.



## Technical data and type

| Type designation <sup>1)</sup><br>PVS980-MVP                 | -1818kVA-<br>I-xx                                                                                           | -1909kVA-<br>J-xx | -2000kVA-<br>K-xx | -2091kVA-<br>L-xx | -3636kVA-I<br>-xx                       | -3818kVA-<br>J-xx | -4000kVA-<br>K-xx | -4182kVA-<br>L-xx |
|--------------------------------------------------------------|-------------------------------------------------------------------------------------------------------------|-------------------|-------------------|-------------------|-----------------------------------------|-------------------|-------------------|-------------------|
| <b>General</b>                                               |                                                                                                             |                   |                   |                   |                                         |                   |                   |                   |
| Inverter compatibility                                       | PVS980-58-xxxx                                                                                              |                   |                   |                   | 2 x PVS980-58-xxxx                      |                   |                   |                   |
| Nominal AC output power<br>( $S_{N(AC)}$ ) @ 50 °C (122°F)   | 1818 kVA                                                                                                    | 1909 kVA          | 2000 kVA          | 2091 kVA          | 3636 kVA                                | 3818 kVA          | 4000 kVA          | 4182 kVA          |
| Maximum AC output power<br>( $S_{MAX(AC)}$ ) @ 35 °C (122°F) | 2000 kVA                                                                                                    | 2100 kVA          | 2200 kVA          | 2300 kVA          | 4000 kVA                                | 4200 kVA          | 4400 kVA          | 4600 kVA          |
| Nominal output voltage ( $U_{N(AC)}$ )                       | 12 kV to 36 kV <sup>2)</sup>                                                                                |                   |                   |                   |                                         |                   |                   |                   |
| Ambient temperature range<br>(nominal ratings) <sup>3)</sup> | -25 °C to +50 °C                                                                                            |                   |                   |                   |                                         |                   |                   |                   |
| Maximum altitude (above sea<br>level) <sup>4)</sup>          | 1000 m                                                                                                      |                   |                   |                   |                                         |                   |                   |                   |
| <b>Switchgear</b>                                            |                                                                                                             |                   |                   |                   |                                         |                   |                   |                   |
| Medium voltage switchgear<br>type <sup>5)</sup>              | SF <sub>6</sub> -insulated RMU, CV or CCV, rated 540 A at 50 °C (nominal 630 A)                             |                   |                   |                   |                                         |                   |                   |                   |
| Enclosure                                                    | Painted Aluzinc coated steel outdoor enclosure, IP54                                                        |                   |                   |                   |                                         |                   |                   |                   |
| Protection relay <sup>6)</sup>                               | REJ603 protection relay (self-powered)                                                                      |                   |                   |                   |                                         |                   |                   |                   |
| Options <sup>7)</sup>                                        | SF <sub>6</sub> gas alarm, switch positions, plug-in type MV surge protection, automatic cut-off or reclose |                   |                   |                   |                                         |                   |                   |                   |
| <b>Transformer</b>                                           |                                                                                                             |                   |                   |                   |                                         |                   |                   |                   |
| Transformer type                                             | Oil immersed ONAN, outdoor design                                                                           |                   |                   |                   |                                         |                   |                   |                   |
| Power rating                                                 | 1818 kVA                                                                                                    | 1909 kVA          | 2000 kVA          | 2091 kVA          | 3636 kVA                                | 3818 kVA          | 4000 kVA          | 4182 kVA          |
| LV voltage level                                             | 600 V                                                                                                       | 630 V             | 660 V             | 690 V             | 2 x 600 V                               | 2 x 630 V         | 2 x 660 V         | 2 x 690 V         |
| MV voltage level                                             | 12 kV to 36 kV <sup>2)</sup>                                                                                |                   |                   |                   |                                         |                   |                   |                   |
| LV terminals                                                 | 3 flag type terminals <sup>8)</sup>                                                                         |                   |                   |                   | 2 x 3 flag type terminals <sup>8)</sup> |                   |                   |                   |
| MV terminals                                                 | bolted C-type                                                                                               |                   |                   |                   |                                         |                   |                   |                   |
| Standard protection                                          | 2 x temperature, gas, pressure                                                                              |                   |                   |                   |                                         |                   |                   |                   |

1) Where xx-medium voltage level

2) Nominal voltage 12 kV to 36 kV, from 6 kV as option

3) Extended range upon request

4) Higher altitude upon request

5) Other switchgear types available as an option

6) Other relay types upon request

7) Other options upon request

8) LV terminal box available as an option

# **PVS980 central inverters connectivity solutions**



# Plant controller & SCADA

PVS980 inverters come with MODBUS/TCP fieldbus interface and MODBUS/RTU communication links as standard. Plug-in connectivity adapters enable communication with all major automation networks.

The inverter supports two Ethernet communication ports simultaneously offering the possibility for ring topology connectivity.

With a local webpage interface the following service can be activated:

- Simple Network Time Protocol (SNTP) for time synchronization
- Remote access with PC tool via Ethernet tool network

## Highlights

- Plug-in connectivity adapters enable communication with all major automation networks
- Single point of access to all the inverters
- Ring topology for high reliability



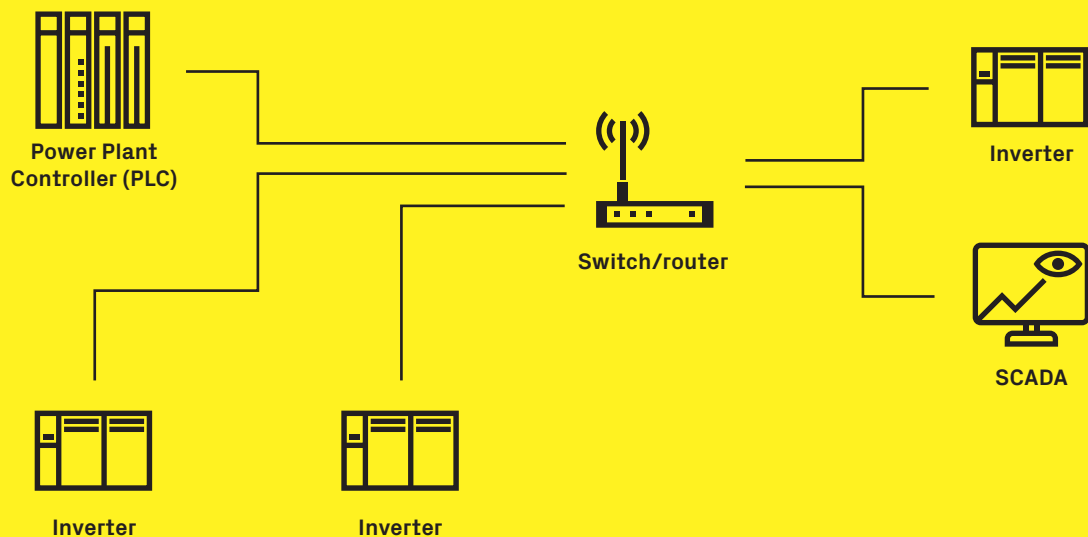
Cost efficient and scalable solutions



Data handling for efficient cloud-solutions



Real-time Monitoring



# Remote monitoring solutions

## Cloud data collection Aurora Vision

Monitor your central inverter solar power plants the way you want with Aurora Vision.

Aurora Vision comes with different products for better meeting the needs of customers aiming to monitor and manage their own solar assets in a very cost-effective manner.

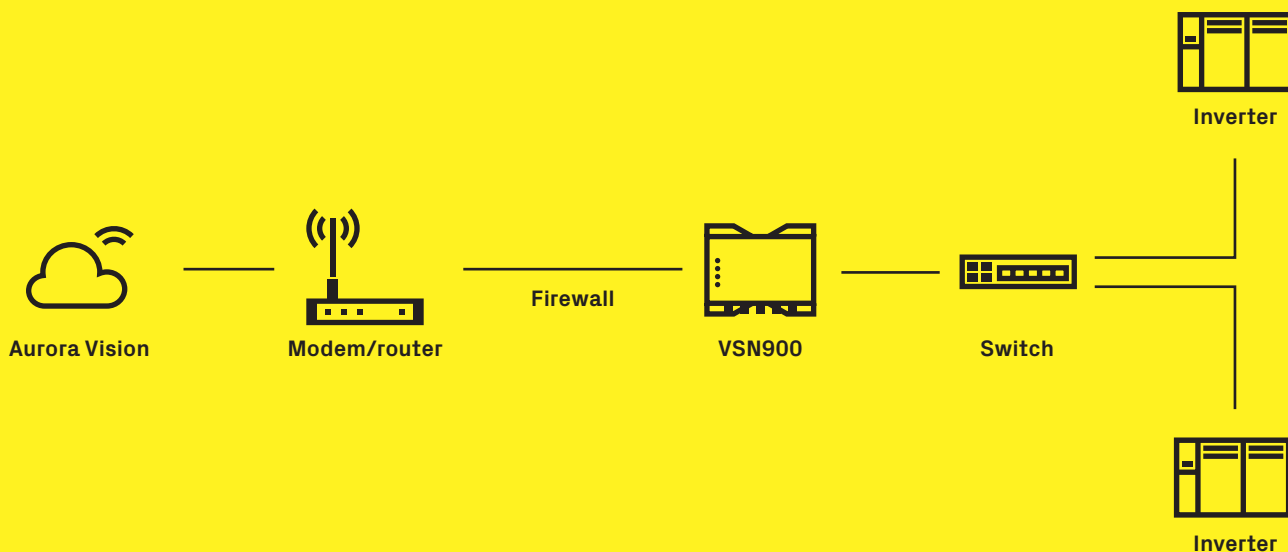
Aurora Vision includes:

- Plant Portfolio Manager: the professional web portal
- Plant Viewer: the simplified web portal
- Plant Viewer for mobile: the mobile app for power generation applications
- Energy Viewer: mobile app for self-consumption applications
- Aurora Vision Application program interface (API): enabling data-sharing with third party systems

Thanks to the simple integration of our gateway VSN900 the central inverters can be connected to the cloud and send data to Aurora Vision.

### Highlights

- Easy cloud connection of whole power plant
- Active control of transferred data
- Smart data handling on edge-level for cost-efficient cloud-solutions



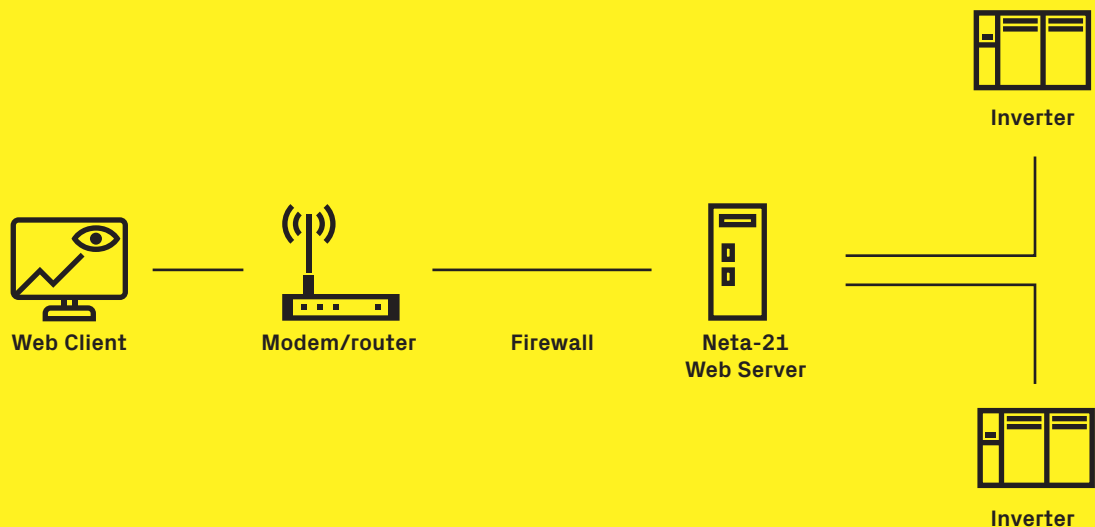
# Remote monitoring solutions

## Inverter direct remote access

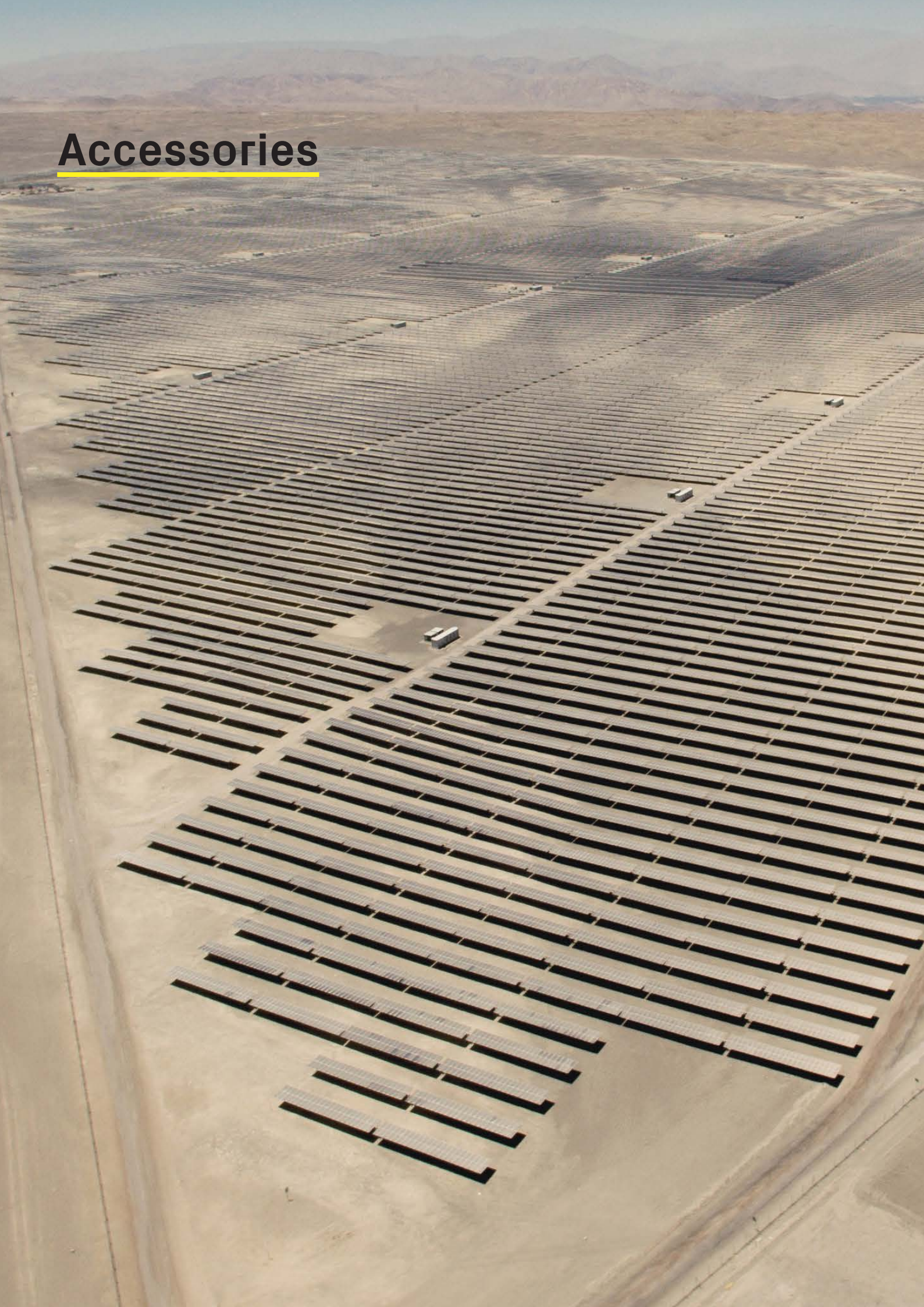
With a built-in web server and standalone data logger, the NETA-21 remote monitoring tool enables secure worldwide access to the inverters. Inverter data can also be collected via 3G/4G mobile connection (modem not included). The remote monitoring tool gives easy access to the inverter via the Internet or a local Ethernet network. NETA-21 comes with a built-in web server. Through the web interface, the user can monitor log data in real-time and access the inverter parameters. One NETA-21 supports up to 10 inverters. The collected data can be stored remotely and utilized for service, maintenance and troubleshooting.

### Highlights

- Cost efficient direct monitoring
- Full real-time monitoring of the inverter status
- Scalable & platform-independent remote connectivity



# Accessories



# Monitoring and communications

## VSN800 Weather Station

The weather stations belonging to the VSN800 family allow the monitoring of a series of environmental and panel data through Aurora Vision® cloud platform, being equipped with temperature, irradiation and wind sensors.



The VSN800 contains the essential environmental sensor set needed for solar monitoring. The expanded sensor set allows a wider monitoring of environmental parameters. VSN800 is the perfect companion to the VSN700 Data Logger products and it can directly be connected to the RS-485 port of the new PVS string inverter families.

### Shipped preconfigured and ready for installation requiring no special tools

The VSN800 Weather Station is delivered ready for installation and requires the installer to mechanically mount the modules on a user-supplied mast, connect power and communication, and initialize the automatic system commissioning process. No special software, or on-site calibration is required.

The all-in-one weather station reduces the installation, support and maintenance cost while improving the robustness and manageability of the PV plant monitoring solution.

The basic sensor set the VSN800-12 model is equipped with provides data needed to calculate a performance ratio allowing a plant operator to track solar array performance

against expected energy production.

The advanced sensor set the VSN800-14 model is equipped with improves monitoring of weather conditions that can affect energy production. The extra irradiance sensor for mounting at the plane of the array allows more accurate measurement of irradiance that is incident in the plane of the solar panels.

The wind speed and direction sensor gives the operator information about how the wind may be cooling the panels and some indication of how much dust may be accumulating on the panels.

### Highlights

- Two models offered for basic and advanced sensor sets
- VSN800-12 includes a basic sensor set: ambient temperature, solar irradiance, and back of module temperature
- VSN800-14 includes additional advanced sensors: plane of array irradiance and wind direction and speed
- Sensors, data acquisition unit, and RS-485
- Can be connected directly to the RS-485 port of the new PVS string inverter families.

# FIMER string combiner boxes **SB**

FIMER's offering includes the string combiner boxes SB to ensure the first parallel connection of the PV modules of solar generator modules. Equipped with a robust exterior case, the high-performance boxes guarantee quick and safe installation for outdoor usage and reduce plant downtime.

## **SB zone monitoring**

FIMER's SB zone monitoring combiner boxes are designed for quick and safe installation of centralized solar plants.

Equipped with 20A fuses (30 A available on request), the boxes protect solar panels from overcurrent. The disconnecter of the output and input fuses allows isolating single PV subfields or individual strings from the other parts of the PV system, enabling operators to work safely both during installation and maintenance activities.

Each combiner box is equipped with safety devices as well as a SPD varistor to faults due to overvoltage and lightning.

## **Highlights**

- 1000 and 1500 Vdc combiner boxes
- Possible amount of DC inputs: 16, 20, 24, 32





## Technical data

| Type code                                               | SB 1010                                                                           | SB 1210     | SB 1610                         | SB 2410                         | SB 3210                         |
|---------------------------------------------------------|-----------------------------------------------------------------------------------|-------------|---------------------------------|---------------------------------|---------------------------------|
| Combiner box                                            | IA0.595.110                                                                       | IA0.595.112 | IA0.595.116                     | IA0.595.124                     | IA0.595.132                     |
| Max voltage ( $V_{cc}$ )                                | 1.000 V                                                                           |             |                                 |                                 |                                 |
| N° of DC+ input                                         | 10                                                                                | 12          | 16                              | 24                              | 32                              |
| N° of DC- input                                         | 10                                                                                | 12          | 16                              | 24                              | 32                              |
| Max. input short-circuit current (IscSTC) <sup>1)</sup> | 12.5 A                                                                            |             | 13.75 A                         | 12.5 A                          |                                 |
| Max. output short-circuit current (IscSTC)              | 125 A                                                                             | 150 A       | 220 A                           | 300 A                           | 400 A                           |
| SPD protection                                          | SPD Type II 15 kA / 40 kA                                                         |             |                                 |                                 |                                 |
| <b>Housing</b>                                          |                                                                                   |             |                                 |                                 |                                 |
| Case                                                    | GRP (Glass fiber reinforced polyester)                                            |             |                                 |                                 |                                 |
| Door / Opening angle / Lock                             | Blind /> 120° / Standard                                                          |             |                                 |                                 |                                 |
| Housing Dimensions (WxDxH mm)                           | 550x270x650                                                                       |             |                                 |                                 | 618x325x822                     |
| Weight                                                  | 16 kg                                                                             | 18 kg       | 22 kg                           | 26 kg                           | 36 kg                           |
| External protection degree                              | IP65 (outdoor installation)                                                       |             |                                 |                                 |                                 |
| Open door protection degree                             | IP20                                                                              |             |                                 |                                 |                                 |
| Safety class                                            | Class II                                                                          |             |                                 |                                 |                                 |
| Colour                                                  | RAL 7035                                                                          |             |                                 |                                 |                                 |
| <b>Environmental data</b>                               |                                                                                   |             |                                 |                                 |                                 |
| Operating temperature                                   | -20° C / +50° C (the cabinet must be kept constantly in the shade) <sup>***</sup> |             |                                 |                                 |                                 |
| Storage                                                 | -25° C / +60° C                                                                   |             |                                 |                                 |                                 |
| Height above the sea <sup>1)</sup>                      | up to 4.000 m                                                                     |             |                                 |                                 |                                 |
| Humidity                                                | 0-95% (no-condensing)                                                             |             |                                 |                                 |                                 |
| <b>DC input</b>                                         |                                                                                   |             |                                 |                                 |                                 |
| Input cable entry                                       | nr 3 PG32 with 4 input each one                                                   |             | nr 4 PG32 with 4 input each one | nr 6 PG32 with 4 input each one | nr 8 PG32 with 4 input each one |
| Input connection                                        | Directly on fuse holder                                                           |             |                                 |                                 |                                 |
| Conductor cross section                                 | 4 - 6 mm <sup>2</sup>                                                             |             |                                 |                                 |                                 |
| Fuse Type                                               | 10.3 x 38 - gPV Type curve                                                        |             |                                 |                                 |                                 |
| Fuse size ( $A_{dc}$ ) <sup>2) (**)</sup>               | up to 25 A                                                                        |             |                                 |                                 | up to 20 A                      |
| N° fuse                                                 | 20                                                                                | 24          | 32                              | 48                              | 64                              |
| <b>DC Output</b>                                        |                                                                                   |             |                                 |                                 |                                 |
| Output cable gland <sup>1)</sup>                        | nr 1 PG per pole                                                                  |             |                                 |                                 |                                 |
| Clamping Area                                           | 17-38 mm                                                                          |             |                                 |                                 |                                 |
| Conductor material                                      | Copper                                                                            |             |                                 |                                 |                                 |
| Terminal type                                           | Copper bus-bar with M12 screw                                                     |             |                                 |                                 |                                 |
| Voltage DC switch                                       | 1.000 V <sub>DC</sub>                                                             |             |                                 |                                 |                                 |
| Current DC switch (DC-21B) <sup>1)</sup>                | 200 A                                                                             |             | 315 A                           | 500 A                           |                                 |

1) Derating of VN versus altitude. 1.0 % per 100 m from 2.001 m to 3.000 m.  
1.2 % per 100 m from 3.001 m to 4.000 m.

2) Upgrade to 30 A available on request

(\*) Contact factory for different value

(\*\*) Select the fuse ampacity on the base of the rated current and the operating temperature

(\*\*\*) Contact factory for proper placement

Warnings: to feed the electronic devices of the string box control unit, if present, is required an auxiliary external single-phase power supply 230 V<sub>AC</sub> (L + N). Please note that the string box doesn't contain blocking diodes.

**Remark. Features not specifically listed in the present data sheet are not included in the product.**

## Technical data

| Type code                                                            | SB 1215     | SB 1615                                                                | SB 2015                                | SB 2415     | SB 3215     |
|----------------------------------------------------------------------|-------------|------------------------------------------------------------------------|----------------------------------------|-------------|-------------|
| Combiner box                                                         | YVD.F1001.0 | IA0.598.116                                                            | IA0.598.120                            | IA0.598.124 | IA0.598.132 |
| Max voltage (V <sub>CC</sub> )                                       |             |                                                                        |                                        | 1.500 V     |             |
| N° of DC+ input                                                      | 12          | 16                                                                     | 20                                     | 24          | 32          |
| N° of DC- input                                                      | 12          | 16                                                                     | 20                                     | 24          | 32          |
| Max. input short-circuit current (I <sub>sc</sub> STC) <sup>1)</sup> |             |                                                                        |                                        | 12,5 A      |             |
| Max. output short-circuit current (I <sub>sc</sub> STC)              |             | 200 A                                                                  | 250 A                                  | 300 A       | 400 A       |
| Rated output current <sup>3)</sup>                                   | 360 A       |                                                                        |                                        |             |             |
| SPD protection                                                       |             |                                                                        | SPD Type II 15 kA / 40 kA              |             |             |
| <b>Housing</b>                                                       |             |                                                                        |                                        |             |             |
| Case                                                                 |             |                                                                        | GRP (Glass fiber reinforced polyester) |             |             |
| Door / Opening angle / Lock                                          |             |                                                                        | Blind /> 120° / Standard               |             |             |
| Housing Dimensions (WxDxH mm)                                        |             |                                                                        | 550x270x650                            |             | 618x325x822 |
| Weight                                                               | 22 kg       | 22 kg                                                                  | 24 kg                                  | 26 kg       | 36 kg       |
| External protection degree                                           |             |                                                                        | IP65                                   |             |             |
| Open door protection degree                                          |             |                                                                        | IP20                                   |             |             |
| Safety class                                                         |             |                                                                        | Class II                               |             |             |
| Colour                                                               |             |                                                                        | RAL 7035                               |             |             |
| <b>Environmental data</b>                                            |             |                                                                        |                                        |             |             |
| Operating temperature                                                |             | -20° C / +50° C (The cabinet must be kept constantly in the shade)***) |                                        |             |             |
| Storage                                                              |             | -25° C / +60° C                                                        |                                        |             |             |
| Height above the sea <sup>1)</sup>                                   |             | up to 4.000 m                                                          |                                        |             |             |
| Humidity                                                             |             | 0-95% (no-condensing)                                                  |                                        |             |             |
| <b>DC input</b>                                                      |             |                                                                        |                                        |             |             |
| Input cable entry                                                    |             |                                                                        | Cable gland                            |             |             |
| Input connection                                                     |             |                                                                        | Directly on fuse holder                |             |             |
| Conductor cross section                                              |             |                                                                        | 4 - 6 mm <sup>2</sup>                  |             |             |
| Fuse Type                                                            |             |                                                                        | 10x85 - gPV Type curve                 |             |             |
| Fuse size (A <sub>DC</sub> ) <sup>**)</sup>                          | 30 A        |                                                                        | Up to 20 A <sup>2)</sup>               |             |             |
| N° fuse                                                              | 24          | 32                                                                     | 40                                     | 48          | 64          |
| <b>DC Output</b>                                                     |             |                                                                        |                                        |             |             |
| Output cable gland <sup>1)</sup>                                     |             |                                                                        | nr 1 PG per pole                       |             |             |
| Clamping Area                                                        |             |                                                                        | 17-38 mm                               |             |             |
| Conductor material                                                   |             |                                                                        | Cu or Al                               |             |             |
| Terminal type                                                        |             |                                                                        | Copper bus-bar with M12 screw          |             |             |
| Voltage DC switch                                                    |             |                                                                        | 1.500 V <sub>DC</sub>                  |             |             |
| Current DC switch (DC-21B) <sup>1)</sup>                             | 400 A       |                                                                        | 315 A                                  | 400 A       | 630 A       |

1) Derating of VN versus altitude. 1.0 % per 100 m from 2.001 m to 3.000 m.  
1.2 % per 100 m from 3.001 m to 4.000 m.

2) Upgrade to 30 A available on request

3) At operating temperature >50°C there is a current reduction of 1% per °C.

(\*) Contact factory for different values.

(\*\*) Select the fuse ampacity on the base of the rated current and the operating temperature.

(\*\*\*) Contact factory for proper placement.

Warnings: to feed the electronic devices of the string box control unit, if present, is required an auxiliary external single-phase power supply 230 Vac (L + N).  
Please note that the string box does not contain blocking diodes.

Remark! Features not specifically listed in the present data sheet are not included in the product.

**Remark. Features not specifically listed in the present data sheet are not included in the product.**

# Life cycle services for solar inverters. Optimizing the performance of your solar plant

The FIMER solar service offering spans over the whole lifetime of the solar power plant. Such optimum support to end users secures the value of the solar power plant assets to the owner.

## **Pre-sales**

FIMER pre-sales support helps our customers to select the right inverter and services for their applications. This ensures higher yield and performance of the entire system and compatibility with customer requirements.

## **Order and delivery**

Orders can be placed through any FIMER office, and spare parts can also be ordered online through the web. Our sales and service network offers timely deliveries worldwide.

## **Commissioning**

FIMER certified engineers can advise or undertake the commissioning of the solar inverters and supervise the installation.

## **Maintenance**

FIMER helps to ensure a long lifetime for its solar inverters by providing on-site preventive maintenance. Preventive maintenance consists of annual inspections and component replacements according to specific maintenance schedules. Reconditioning provides more in-depth maintenance which is carried out at FIMER's authorized service workshops. Reconditioning of the solar inverter includes full inspection, thorough cleaning, individual component analysis and replacement, and complete testing. A service of reactive maintenance is also available.

## **Upgrade and retrofit**

We can advise on the latest hardware and software upgrades that can continue to maximize the performance of your solar inverters even if the grid codes change.

## **Repairs**

FIMER authorized service engineers are standing by to get your equipment back on-line as soon as possible through both on-site and workshop repairs.

## **Warranty monitoring and extension**

The status of your warranty can be monitored online and it is also possible to purchase extensions of the same through the FIMER website.

## **Life cycle model**

The life cycle model divides a product's life cycle into four phases: active, classic, limited and obsolete. Each phase has different implications for the end user in terms of services provided.

## **Benefits of life cycle management**

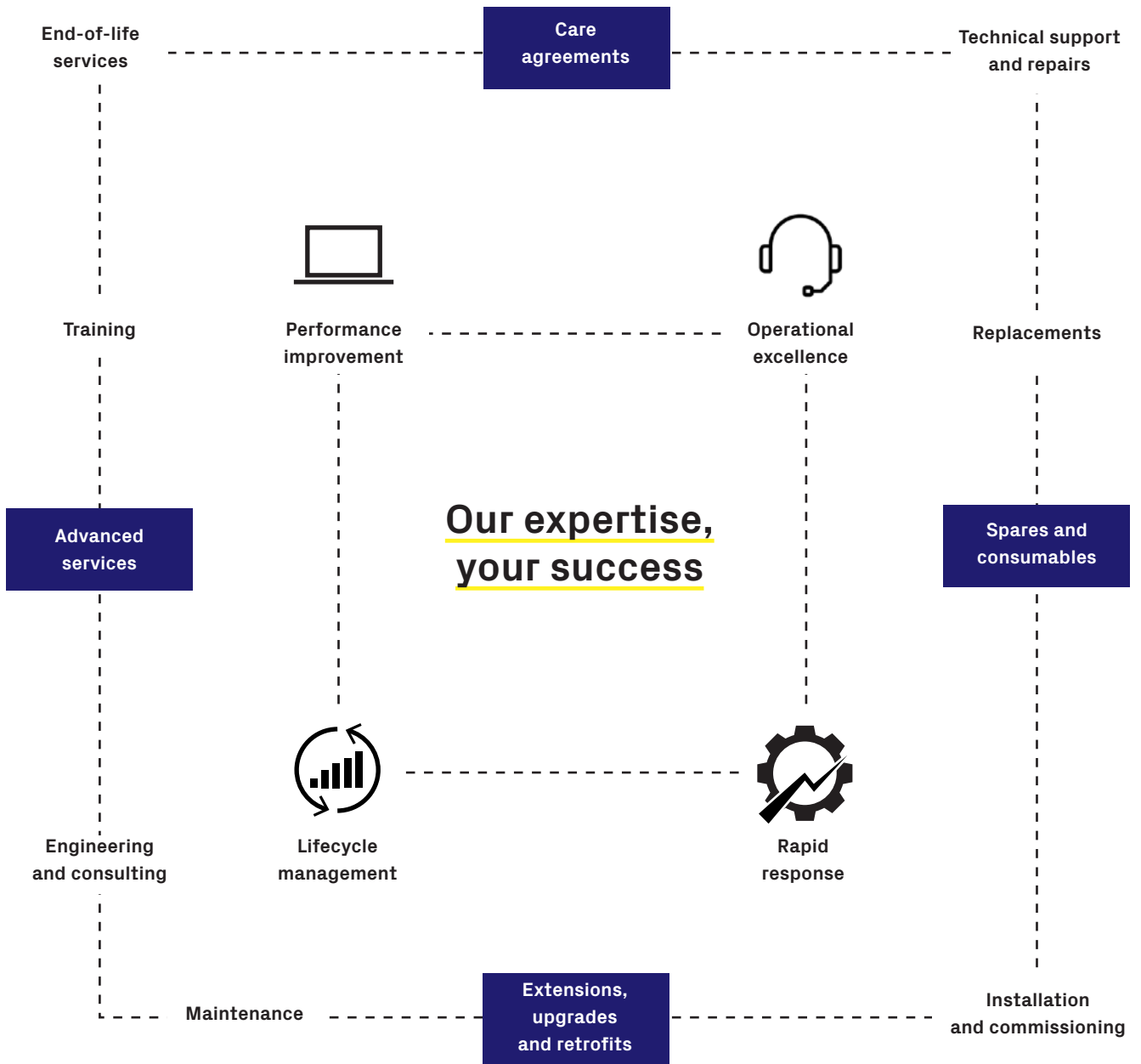
Life cycle management maximizes the value of the solar inverter and its maintenance investments by:

- Ensuring spare parts and FIMER competence availability throughout the lifetime
- Enabling efficient product support and maintenance for improved reliability
- Adding functionality to the initial product by upgrading or retrofitting
- Providing a smooth transition to new technology at the end of the product lifetime

FIMER Solar Care is a modular set of services for predictable care of your asset and peace of mind over the full lifetime of the solar plant.

The offering includes:

- Availability of spares
- Extended warranties
- Preventive maintenance
- Corrective maintenance
- Response time
- Uptime guarantee
- Training
- Technical support



# Honoring our Customers globally

Our goal is to commit and invest to reach Service Excellence, through the consistent improvement of our services. Operating in over 100 countries, we are close to our customers, taking care to understand and satisfy their needs.



## 6 Repair centers



US, Brazil, Italy, Turkey, India and Australia

## World-wide partner network



1000 Field Service Engineers including Service Partners

## On-site technical support



164 FIMER Field Service Engineers

## Immediate availability of spare parts



6 Dedicated service stocked warehouses

**FIMER**

**Friends  
Days**

# Take part in **FIMER** **Friends Days**

## Become a Certified Installer



Join our exclusive events, discover more about our Solar and EV charging solutions. Enjoy our workshops and have fun with the FIMER staff!

A great experience and exclusive benefits are waiting for you.

**Stay tuned on our website!**



# Visit FIMER through the 360° Virtual Tour Experience

Our Made in Italy excellence is just one click away





We are opening the doors of our Italian establishments to the whole world. Thanks to the 360° virtual tour experience, we are pleased to invite our Customers and Partners to visit us, at any time and with a simple click, through your PC or smartphone, and enjoy an interactive and engaging path.

Visitors will be able to access the Italian branches of Vimercate (Monza Brianza) and Terranuova Bracciolini (Arezzo), visiting the manufacturing sites where our photovoltaic inverters and charging solutions for electric vehicles take shape, and experience first hand - although only "virtually" - the quality of the FIMER branded solutions.

Thanks to advanced Matterport technology we have been able to recreate real-life, external and internal images, of the Global HQ of Vimercate, the modern, zero impact production and Research & Development center, and of the magnificent production site located in Terranuova Bracciolini, at the forefront with regards to the quality of production processes and of engineering excellence.

Last but not least: FIMER's Virtual Tour includes insights of the processes and machineries used during the production phase and a dedicated description of the same.

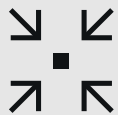
To log in just register on

**[discoverus.fimer.com](https://discoverus.fimer.com)**



# Shaping the future of energy

## For a bright solar future



More than  
**90%**  
of our business is solar



We offer more than  
**12+ GW**  
solar inverter capacity a year



More than  
**25 years**  
of solar experience



The  
**broadest**  
solar portfolio on the market

## For supercharged electric mobility



Active in electric vehicle  
infrastructure since  
**2017**



More than  
**35.000+**  
charging stations installed

**We have the power to support you.**  
**Count on us**

**Stronger. Better. FIMER.**



FIMER S.p.A.  
Via J.F. Kennedy  
20871 Vimercate (MB) – ITA

[www.fimer.com](http://www.fimer.com)

